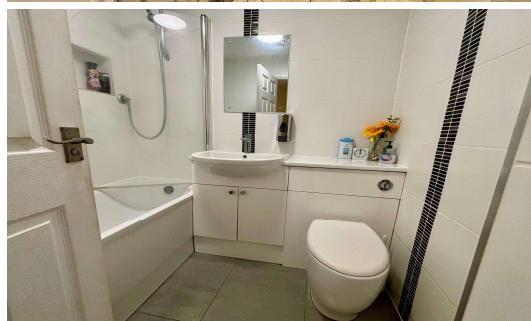
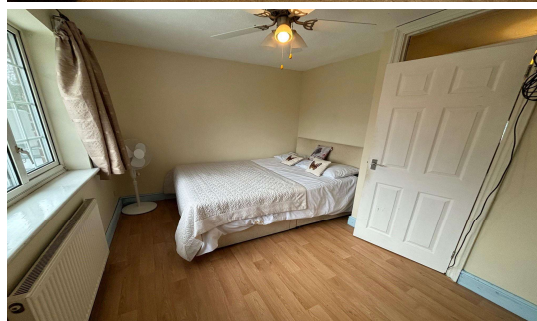
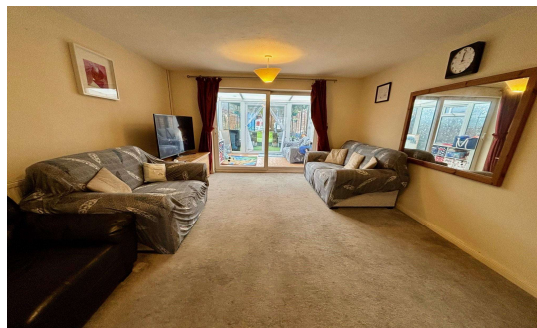




Bourne Meadow, Thorpe, TW20 8QH

£350,000 Freehold

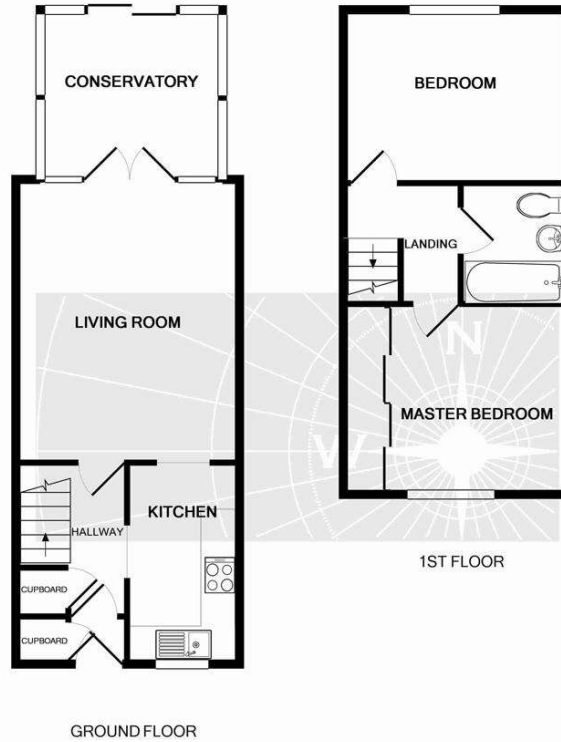


An excellent opportunity to acquire this two bedroom terrace property, situated within a cul-de-sac, located within walking distance of local schools, playing fields and parks. Accommodation comprises entrance hallway, lounge/dining room, kitchen, conservatory, first floor family bathroom, private rear garden and garage in nearby block. **NO ONWARD CHAIN.**

ZERO STAMP DUTY FOR FIRST TIME BUYERS UP TO £425,000

Bourne Meadow, Thorpe, Surrey, TW20 8QH

FLOOR PLAN



Whilst every attempt has been made to ensure the accuracy of the floor plan contained here, measurements of doors, windows, rooms and any other items are approximate and no responsibility is taken for any error, omission, or mis-statement. This plan is for illustrative purposes only and should be used as such by any prospective purchaser. The services, systems and appliances shown have not been tested and no guarantee as to their operability or efficiency can be given.
Made with Metropix ©2011

All measurements are approximate. Nevin & Wells Residential have not tested any systems or appliances.

EPC

8 Bourne Meadow
Egham
TW20 8QH

Energy rating: **C**

Valid until: 21 October 2031
Certificate number: 2529-3910-4200-4829-7204

Property type: Mid-terrace house
Total floor area: 59 square metres

Rules on letting this property

Properties can be let if they have an energy rating from A to E.
You can read [guidance for landlords on the regulations and exemptions](#).

Energy rating and score

This property's current energy rating is C. It has the potential to be B.
[See how to improve this property's energy efficiency.](#)

Score	Energy rating	Current	Potential
92+	A		
81-91	B		
69-80	C	70 C	80 B
55-68	D		
39-54	E		
21-38	F		
1-20	G		

The graph shows this property's current and potential energy rating.

COUNCIL TAX BAND: D - Runnymede Borough Council



@NEVIN_AND_WELLS