



A two bedroom first floor apartment offering modern living and spacious accommodation with gas central heating and double glazing. Located close to local shops and Staines upon Thames town centre, with residents parking to rear.

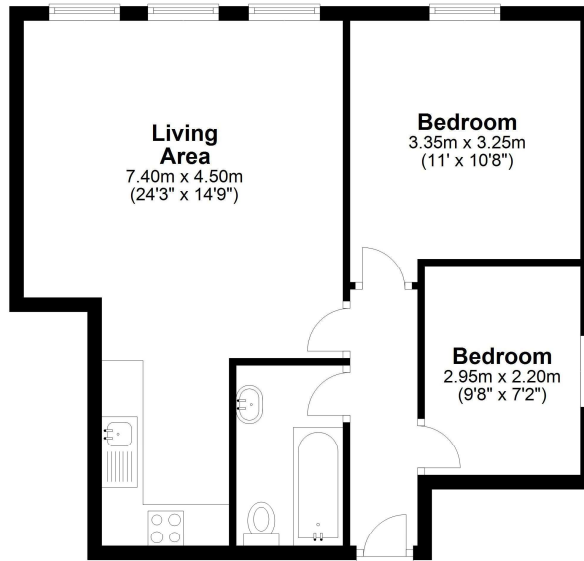
AVAILABLE 26TH FEBRUARY 2024 - UNFURNISHED

Hythe Park Road , Egham, Surrey, TW20 8DG

FLOORPLAN

First Floor

Approx. 52.0 sq. metres (559.2 sq. feet)



Total area: approx. 52.0 sq. metres (559.2 sq. feet)

EPC

14 Paul Court Hythe Park Road EGHAM TW20 8DG	Energy rating C
Valid until 3 July 2033	Certificate number 0110-2384-9236-2407-6125

Property type	Top-floor flat
Total floor area	50 square metres

Rules on letting this property

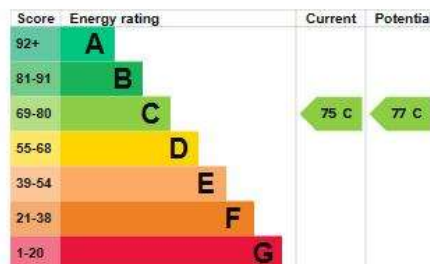
Properties can be let if they have an energy rating from A to E.

You can read [guidance for landlords on the regulations and exemptions](#).

Energy rating and score

This property's energy rating is C. It has the potential to be C.

See [how to improve this property's energy efficiency](#).



The graph shows this property's current and potential energy rating.

Properties get a rating from A (best) to G (worst) and a score. The better the rating and score, the lower your energy bills are likely to be.

COUNCIL TAX BAND: C - Runnymede Borough Council