



One High Street, Egham, Surrey, TW20 9HH £1,800 pcm Guide Price



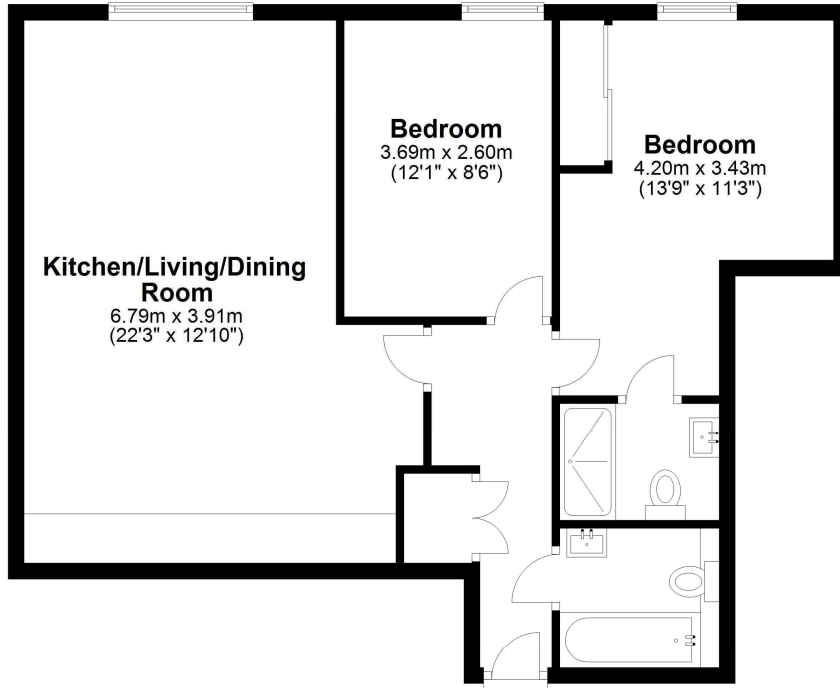
A stunning two double bedroom first floor apartment located in a recently built development. The property boasts high specification features throughout, whilst offering en-suite facilities, open kitchen/living, family bathroom and fitted wardrobes in both bedrooms. Further benefits include audio entrance system, allocated parking and secure bike store. The River Thames tow path, High Street and train station are all within short walking distance.

AVAILABLE 1ST JULY 2024 - UNFURNISHED

One High Street, Egham, Surrey, TW20 9HH

Ground Floor

Approx. 67.3 sq. metres (724.3 sq. feet)



Total area: approx. 67.3 sq. metres (724.3 sq. feet)

All measurements are approximate. Nevin & Wells Residential have not tested any systems or appliances.

EPC

Flat 1 One High Street EGHAM TW20 9HH	Energy rating C
Valid until 6 June 2028	Certificate number 8768-7436-5810-5873-5902

Score	Energy rating	Current	Potential
92+	A		
81-91	B		
69-80	C	79 c	79 c
55-68	D		
39-54	E		
21-38	F		
1-20	G		

The graph shows this property's current and potential energy efficiency.

Properties are given a rating from A (most efficient) to G (least efficient).

Properties are also given a score. The higher the number the lower your fuel bills are likely to be.