



Rusham Road, Surrey, TW20 9LS

£1,250 pcm Guide Price

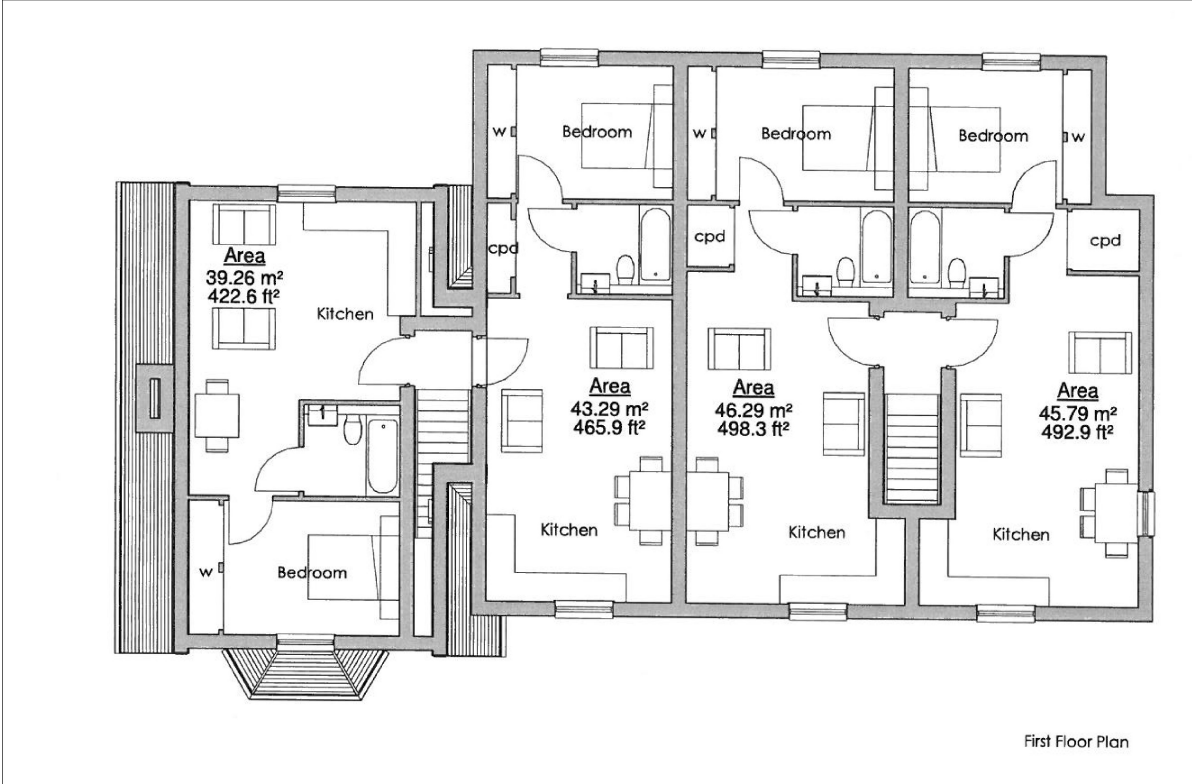


A stunning first floor apartment recently completed to a very high specification, situated within a minutes walk to Egham mainline station. The apartment benefits from fully fitted kitchens, bathroom with shower over, double bedroom with fitted wardrobes. Further benefits include communal gardens to rear, communal off street parking facilities and offered unfurnished. No children or pets.

AVAILABLE 4th APRIL 2024 - UNFURNISHED

Rusham Road, Egham, Surrey, TW20 9LS

FLOOR PLAN



First Floor Plan

All measurements are approximate. Nevin and Wells Residential have not tested any systems or appliances.

EPC

Flat 4 Beaumont Place 9, Rusham Road EGHAM TW20 9LS		Energy rating C
Valid until 31 January 2027	Certificate number 0698-0020-7312-4293-8984	

Score	Energy rating	Current	Potential
92+	A		
81-91	B		
69-80	C	78 c	78 c
55-68	D		
39-54	E		
21-38	F		
1-20	G		