



Mead Court, Surrey, TW20 8XF

£950 pcm Guide Price

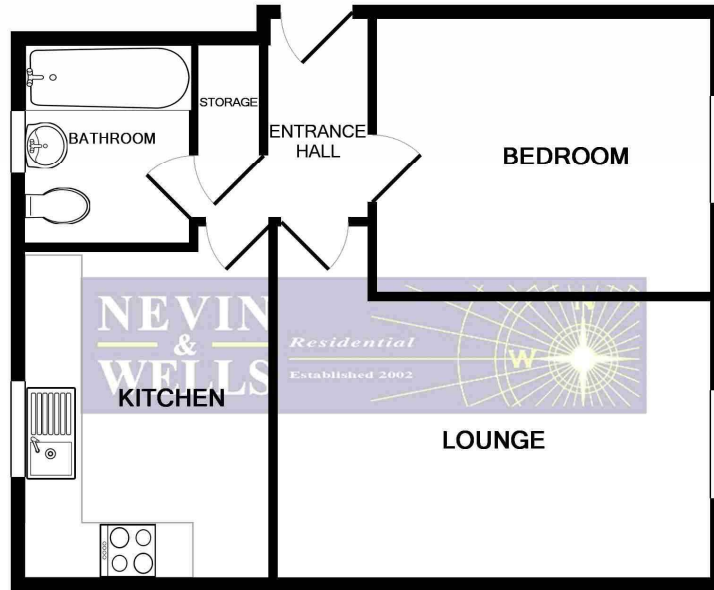


This larger than average double bedroom apartment is situated in a quiet cul-de-sac, close to shops and High Street. Benefits include security entry phone, residents parking, lounge / dining room, kitchen / breakfast room, gas central heating and double glazing.

AVAILABLE 12TH APRIL 2024 - UNFURNISHED

Mead Court, Egham, Surrey, TW20 8XF

FLOOR PLAN



TOTAL APPROX. FLOOR AREA 475 SQ.FT. (44.1 SQ.M.)

Whilst every attempt has been made to ensure the accuracy of the floor plan contained here, measurements of doors, windows, rooms and any other items are approximate and no responsibility is taken for any error, omission, or mis-statement. This plan is for illustrative purposes only and should be used as such by any prospective purchaser. The services, systems and appliances shown have not been tested and no guarantee as to their operability or efficiency can be given
Made with Metropix ©2018

All measurements are approximate. Nevin and Wells Residential have not tested any systems or appliances.

EPC

8 Mead Court EGHAM TW20 8XF	Energy rating C
Valid until 23 April 2033	Certificate number 9500-40-41-6122-6125-1473

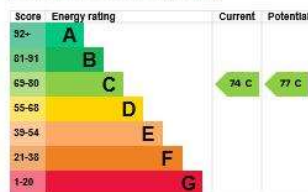
Property type	Ground-floor flat
Total floor area	42 square metres

Rules on letting this property

Properties can be let if they have an energy rating from A to E.
[You can read guidance for landlords on the regulations and exemptions.](#)

Energy rating and score

This property's energy rating is C. It has the potential to be C.
[See how to improve this property's energy efficiency.](#)



The graph shows this property's current and potential energy rating.
Properties get a rating from A (best) to G (worst) and a score. The better the rating and score, the lower your energy bills are likely to be.
For properties in England and Wales:
• the average energy rating is D
• the average energy score is 60

COUNCIL TAX BAND: C_ - Runnymede Borough Council