



Quincy Road, Egham, Surrey, TW20 9JH

£1,500 pcm Guide Price



A two bedroom mid-terrace house which is located within a few minutes' walk of mainline station and Egham's Magna Square. The property offers shaker style kitchen, spacious lounge, downstairs W.C, conservatory and modern first floor bathroom. Further benefits include private rear garden and allocated parking.

**No pets, No Children.**

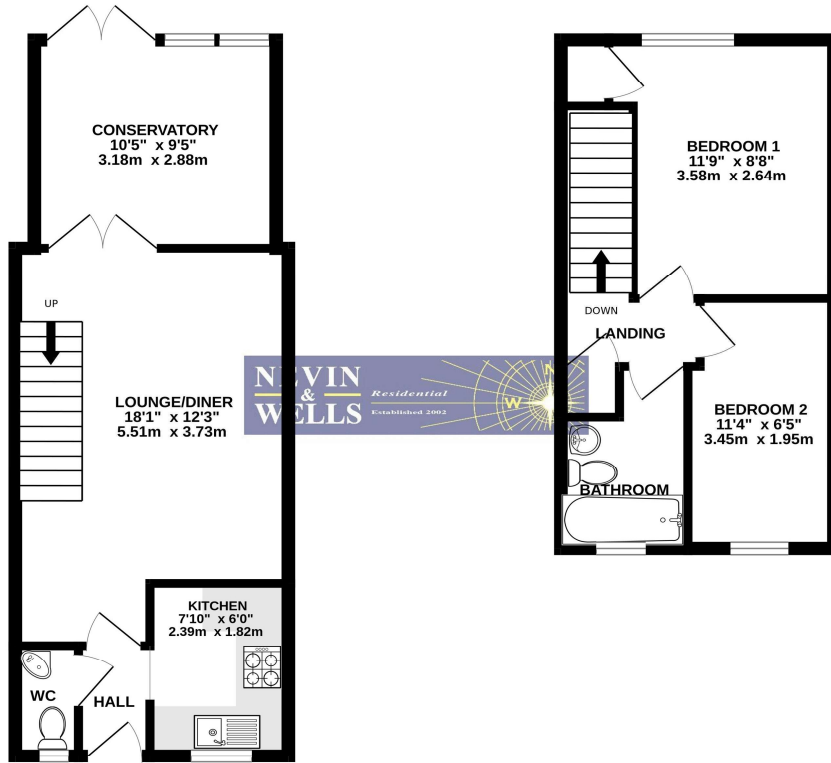
**AVAILABLE 7<sup>TH</sup> MARCH 2024 - UNFURNISHED**

# Quincy Road, Egham, Surrey, TW20 9JH

## FLOORPLAN

GROUND FLOOR  
370 sq.ft. (34.4 sq.m.) approx.

1ST FLOOR  
272 sq.ft. (25.2 sq.m.) approx.

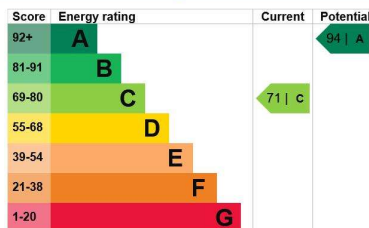


TOTAL FLOOR AREA: 642 sq.ft. (59.6 sq.m.) approx.

Whilst every attempt has been made to ensure the accuracy of the floorplan contained here, measurements of doors, windows, rooms and any other items are approximate and no responsibility is taken for any error, omission or mis-statement. This plan is for illustrative purposes only and should be used as such by any prospective purchaser. The services, systems and appliances shown have not been tested and no guarantee as to their operability or efficiency can be given.  
Made with Metropix ©2024

### EPC

20, Quincy Road EGHAM TW20 9JH		Energy rating <b>C</b>
Valid until <b>3 May 2023</b>	Certificate number <b>0902-2887-7354-9007-8215</b>	



The graph shows this property's current and potential energy efficiency.

Properties are given a rating from A (most efficient) to G (least efficient).

Properties are also given a score. The higher the number the lower your fuel bills are likely to be.