



Rydal Way, Egham, TW20 8JH

£2,600 pcm Guide Price

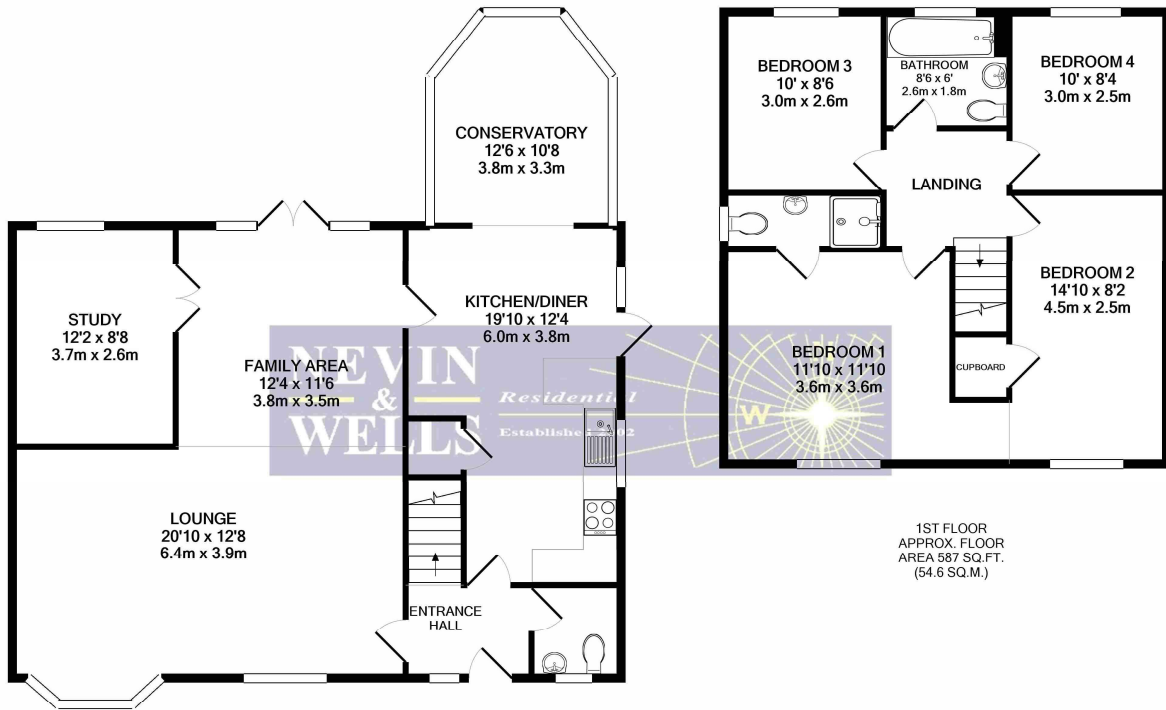


Situated in a quiet cul-de-sac, this extended family home offers spacious and versatile accommodation in addition to a double garage. The layout comprises four double bedrooms, three reception rooms and two bathrooms (one en-suite). The rear garden is very wide and gives total seclusion and to the front, there is parking for five cars. Access to local shops and recreation park is a few minutes walk and Egham mainline station is within a one mile radius.

AVAILABLE 8th APRIL 2024 - UNFURNISHED

Rydal Way, Egham, Surrey, TW20 8JH

FLOORPLAN



GROUND FLOOR
APPROX. FLOOR
AREA 925 SQ.FT.
(86.0 SQ.M.)

1ST FLOOR
APPROX. FLOOR
AREA 587 SQ.FT.
(54.6 SQ.M.)

TOTAL APPROX. FLOOR AREA 1513 SQ.FT. (140.6 SQ.M.)

Whilst every attempt has been made to ensure the accuracy of the floor plan contained here, measurements of doors, windows, rooms and any other items are approximate and no responsibility is taken for any error, omission, or mis-statement. This plan is for illustrative purposes only and should be used as such by any prospective purchaser. The services, systems and appliances shown have not been tested and no guarantee as to their operability or efficiency can be given
Made with Metropix ©2019

EPC

10, Rydal Way EGHAM TW20 8JH	Energy rating D
Valid until 9 July 2029	Certificate number 0368-2850-7431-9591-6325

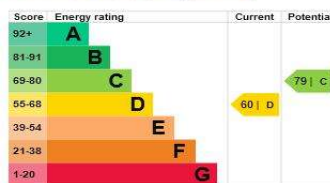
Property type	Detached house
Total floor area	144 square metres

Rules on letting this property

Properties can be let if they have an energy rating from A to E.
You can read [guidance for landlords on the regulations and exemptions](#).

Energy efficiency rating for this property

This property's current energy rating is D. It has the potential to be C.
[See how to improve this property's energy performance.](#)



The graph shows this property's current and potential energy efficiency.
Properties are given a rating from A (most efficient) to G (least efficient).
Properties are also given a score. The higher the number the lower your fuel bills are likely to be.