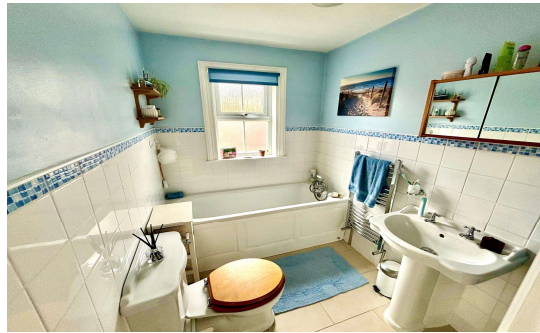
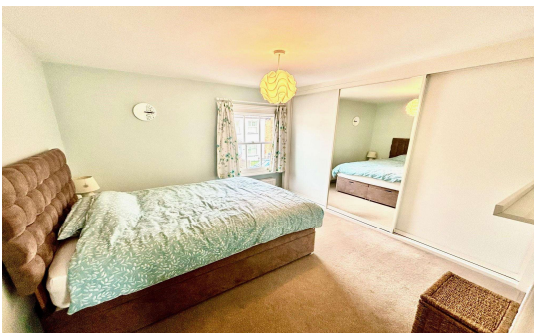




Hummer Road, Egham, TW20 9BW

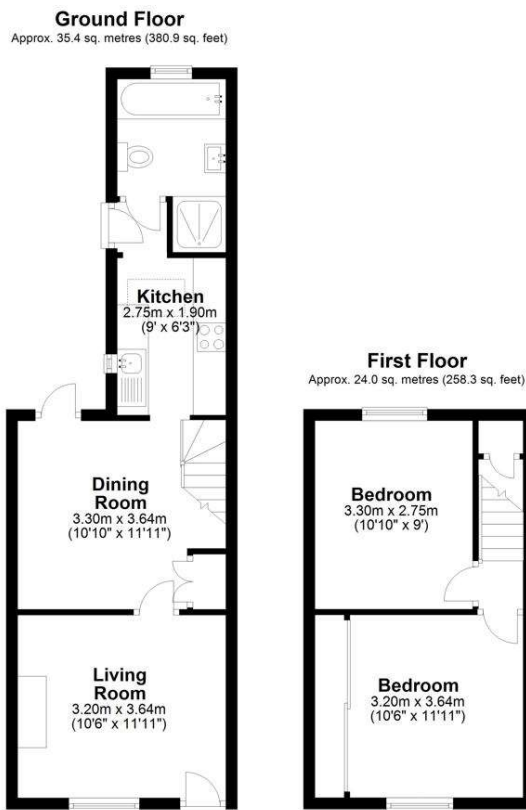
£425,000 Freehold



An absolutely charming and beautifully presented two bedroom Victorian cottage located in the heart of central Egham. Situated within just yards of High Street amenities, Magna Square, Runnymede Meadows, The River Thames and Egham mainline station. Accommodation comprises lounge, dining room, fitted kitchen, bathroom, private South West facing landscaped rear garden and off street parking for one vehicle with car port. VIEWINGS ADVISED.

Hummer Road, Egham, Surrey, TW20 9BW

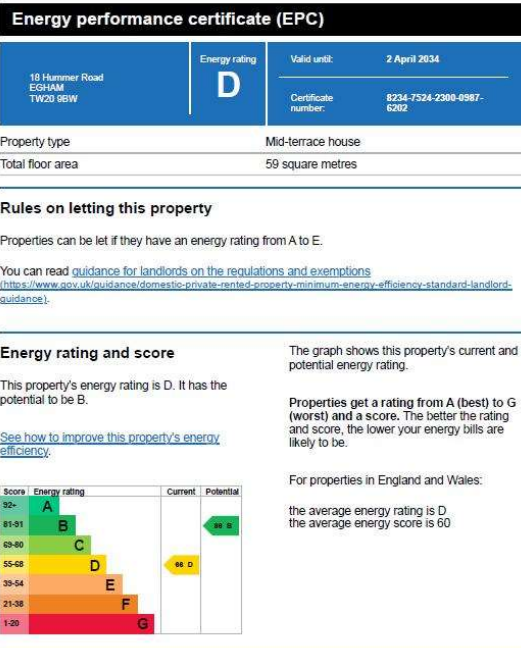
FLOORPLAN



Total area: approx. 59.4 sq. metres (639.2 sq. feet)

All measurements are approximate. Nevin & Wells Residential have not tested any systems or appliances.

EPC



COUNCIL TAX BAND: D - Runnymede Borough Council



@NEVIN_AND_WELLS