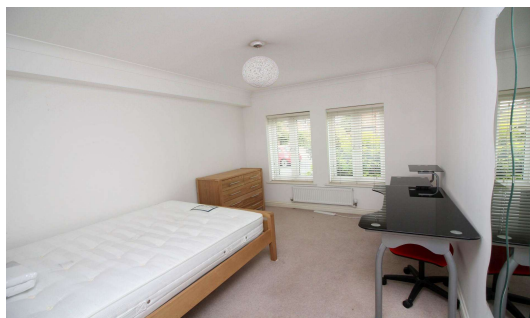




Beckingham Metro, Egham, TW20 9FD £250,000 Leasehold



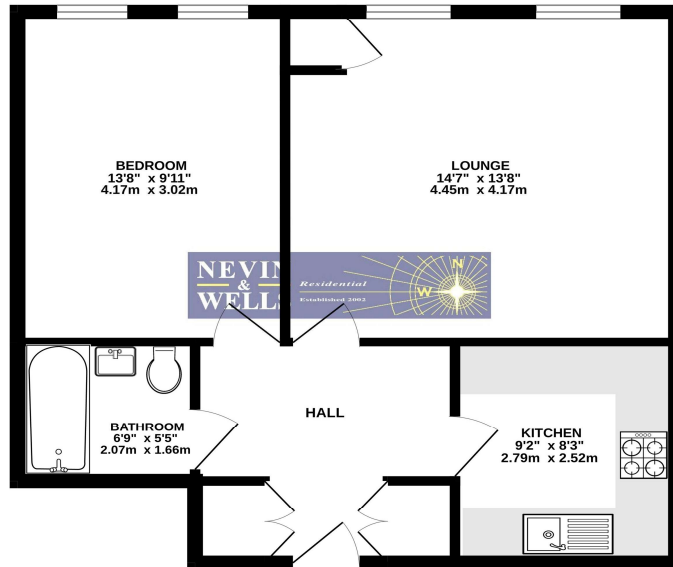
A superb opportunity to buy a raised ground floor apartment offering a large double bedroom, fully fitted kitchen, light and airy accommodation and gated underground parking. Situated near to the mainline station (London, Waterloo 38mins) and walking distance to Egham High Street and Magna Square with Everyman Cinema, coffee shops and superb restaurants. Being sold with no onward chain

ZERO STAMP DUTY FOR FIRST TIME BUYERS UP TO £425,000

Beckingham Metro, Egham, Surrey, TW20 9FD

FLOOR PLAN

GROUND FLOOR
540 sq.ft. (50.2 sq.m.) approx.

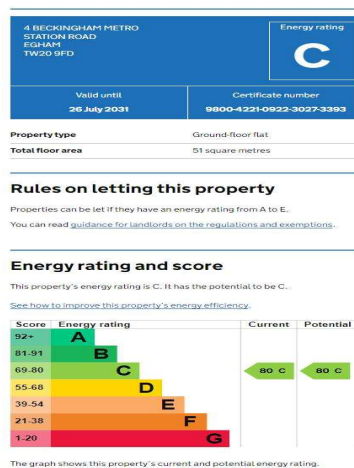


TOTAL FLOOR AREA: 540 sq.ft. (50.2 sq.m.) approx.

Whilst every attempt has been made to ensure the accuracy of the floorplan contained here, measurements of doors, windows, rooms and any other items are approximate and no responsibility is taken for any error, omission or mis-statement. This plan is for illustrative purposes only and should be used as such by any prospective purchaser. The services, systems and appliances shown have not been tested and no guarantee as to their operability or efficiency can be given. Please visit www.nw.co.uk

All measurements are approximate. Nevin & Wells Residential have not tested any systems or appliances.

EPC



COUNCIL TAX BAND: C - Runnymede Borough Council
GROUND RENT: £300 per annum
SERVICE CHARGE: £2,672.55 per annum
LEASE: 150 years from 2010

