



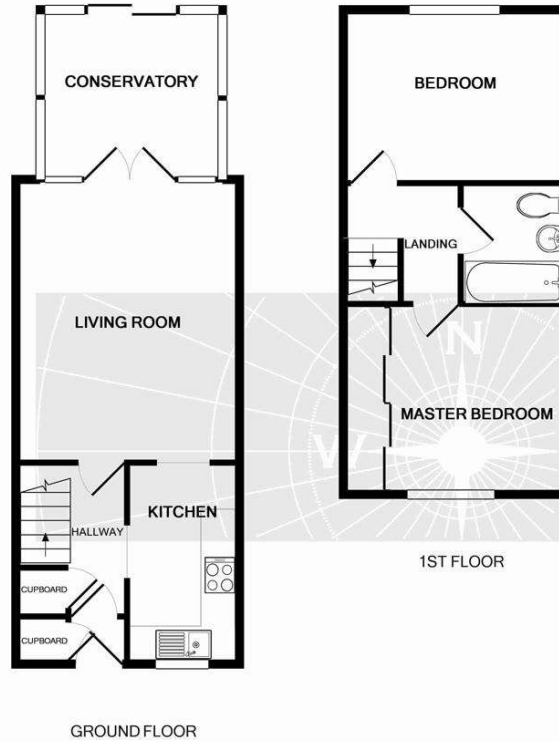
**Argent Close, Egham, Surrey, TW20 8XB    £490,000 Freehold**



Situated in a quiet Cul-de-sac, a modern three bedroom detached property with two car driveway. This property offers lounge/dining room/downstairs WC, kitchen, bathroom, gas central heating, full double glazing, single garage and secluded garden. Access to local shops, schools and recreation park with a ten minute walk. Egham mainline station and new leisure centre are also a ten minute walk

# Argent Close, Egham, Surrey, TW20 8XB

## FLOOR PLAN



Whilst every attempt has been made to ensure the accuracy of the floor plan contained here, measurements of doors, windows, rooms and any other items are approximate and no responsibility is taken for any error, omission, or mis-statement. This plan is for illustrative purposes only and should be used as such by any prospective purchaser. The services, systems and appliances shown have not been tested and no guarantee as to their operability or efficiency can be given.  
Made with Metropix ©2011

All measurements are approximate. Nevin & Wells Residential have not tested any systems or appliances.

## EPC



**COUNCIL TAX BAND: D** - Runnymede Borough Council





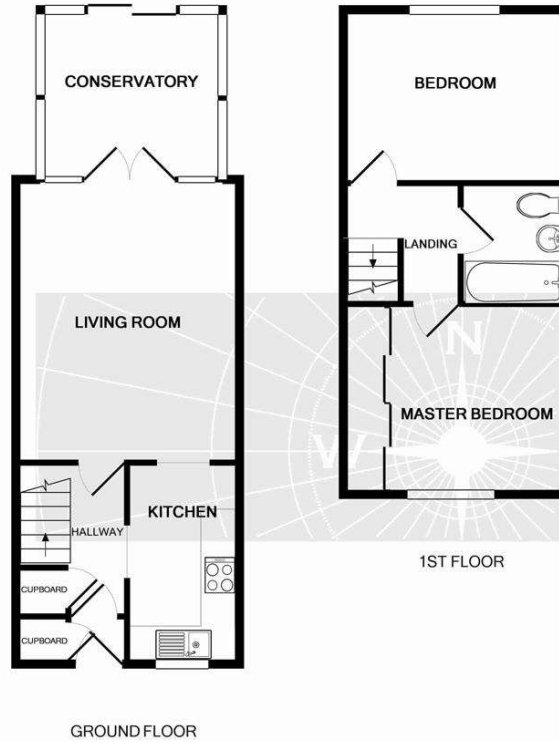
**Argent Close, Egham, Surrey, TW20 8XB    £490,000 Freehold**



Situated in a quiet Cul-de-sac, a modern three bedroom detached property with two car driveway. This property offers lounge/dining room/downstairs WC, kitchen, bathroom, gas central heating, full double glazing, single garage and secluded garden. Access to local shops, schools and recreation park with a ten minute walk. Egham mainline station and new leisure centre are also a ten minute walk

# Argent Close, Egham, Surrey, TW20 8XB

## FLOOR PLAN



Whilst every attempt has been made to ensure the accuracy of the floor plan contained here, measurements of doors, windows, rooms and any other items are approximate and no responsibility is taken for any error, omission, or mis-statement. This plan is for illustrative purposes only and should be used as such by any prospective purchaser. The services, systems and appliances shown have not been tested and no guarantee as to their operability or efficiency can be given.  
Made with Metropix ©2011

All measurements are approximate. Nevin & Wells Residential have not tested any systems or appliances.

## EPC



**COUNCIL TAX BAND: D - Runnymede Borough Council**

