



**Glebe Road, Egham, Surrey, TW20 8BT    £1,250 pcm Unfurnished**

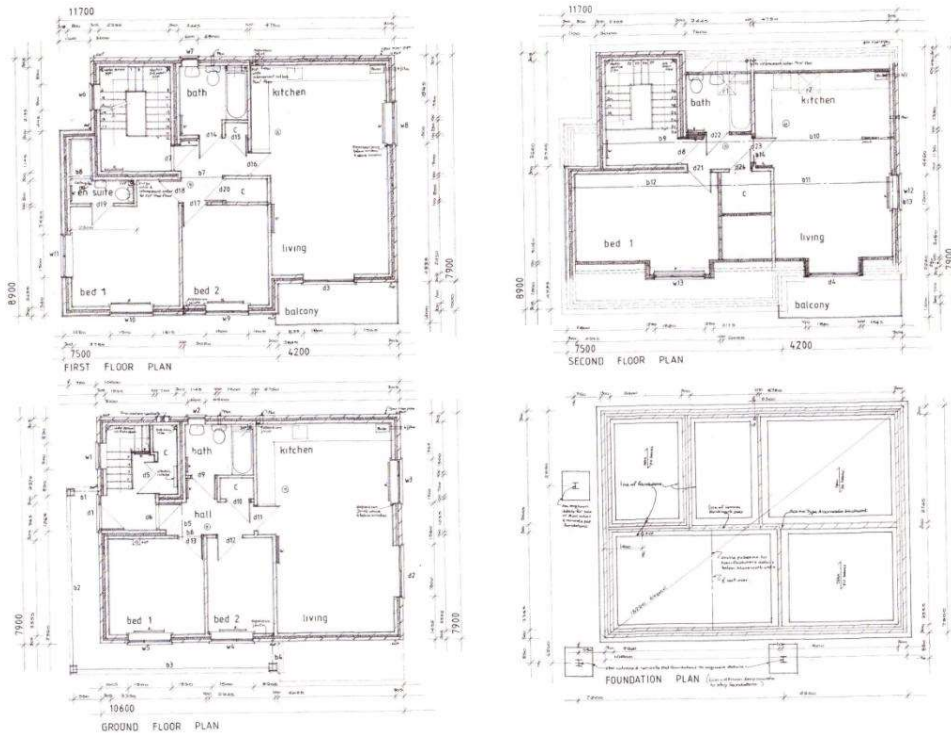


A stunning and larger than average one bedroom top floor apartment with an additional study. There is also a balcony off the lounge, parking, gas central heating and double glazing. Internal viewing is a must.

**AVAILABLE 4<sup>th</sup> October 2024**

**Glebe Road, Egham, Surrey, TW20 8BY**

**FLOORPLAN**



**EPC**

Energy Efficiency Rating		Environmental Impact (CO <sub>2</sub> ) Rating	
	Current	Potential	
Very energy efficient - lower running costs			Very environmentally friendly - lower CO <sub>2</sub> emissions
(92-100) <b>A</b>			(92-100) <b>A</b>
(81-91) <b>B</b>			(81-91) <b>B</b>
(69-80) <b>C</b>	82	82	(69-80) <b>C</b>
(55-68) <b>D</b>			(55-68) <b>D</b>
(39-54) <b>E</b>			(39-54) <b>E</b>
(21-38) <b>F</b>			(21-38) <b>F</b>
(1-20) <b>G</b>			(1-20) <b>G</b>
Not energy efficient - higher running costs			Not environmentally friendly - higher CO <sub>2</sub> emissions
<b>England, Scotland &amp; Wales</b>	EU Directive 2002/91/EC		<b>England, Scotland &amp; Wales</b>
			EU Directive 2002/91/EC

The energy efficiency rating is a measure of the overall efficiency of a home. The higher the rating the more energy efficient the home is and the lower the fuel bills will be.

The environmental impact rating is a measure of a home's impact on the environment in terms of carbon dioxide (CO<sub>2</sub>) emissions. The higher the rating the less impact it has on the environment.