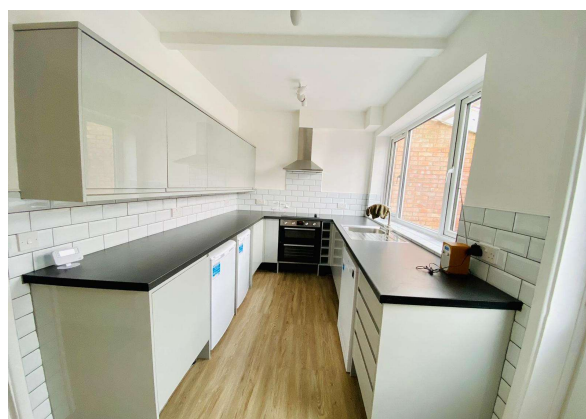




Bond Street, Surrey, TW20 0PX

£2.150 pcm Unfurnished

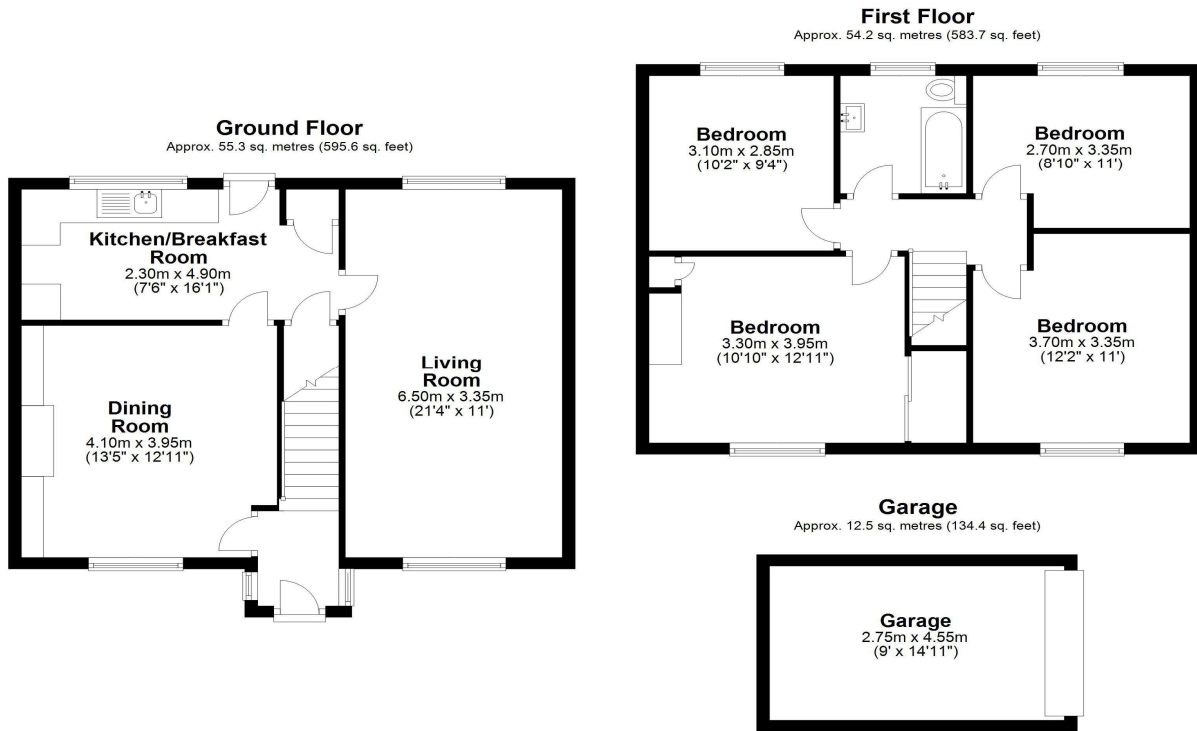


A four bedroom semi-detached house located in Englefield Green, within short walking distance to local shops and amenities. The property comprises two receptions, fully fitted kitchen and first floor bathroom. Further benefits include gas central heating, garden and off street parking.

AVAILABLE 16TH DECEMBER 2024

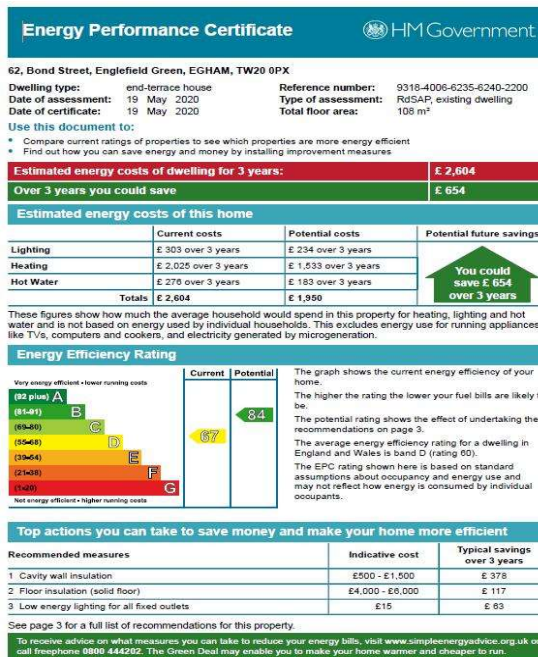
Bond Street, Englefield Green, Surrey, TW20 0PX

FLOOR PLAN



Total area: approx. 122.1 sq. metres (1313.8 sq. feet)

EPC



All measurements are approximate. Nevin and Wells Residential have not tested any systems or appliances.