



High Street, Egham, Surrey, TW20

£1,300 pcm Guide Price



A stunning modern one double bedroom top floor penthouse apartment with private wrap around terrace, 'L' shaped open plan reception with fitted kitchen, entry phone system and underfloor heating. Situated on the High Street of Egham Close to mainline station and Magna Square with Everyman cinema.

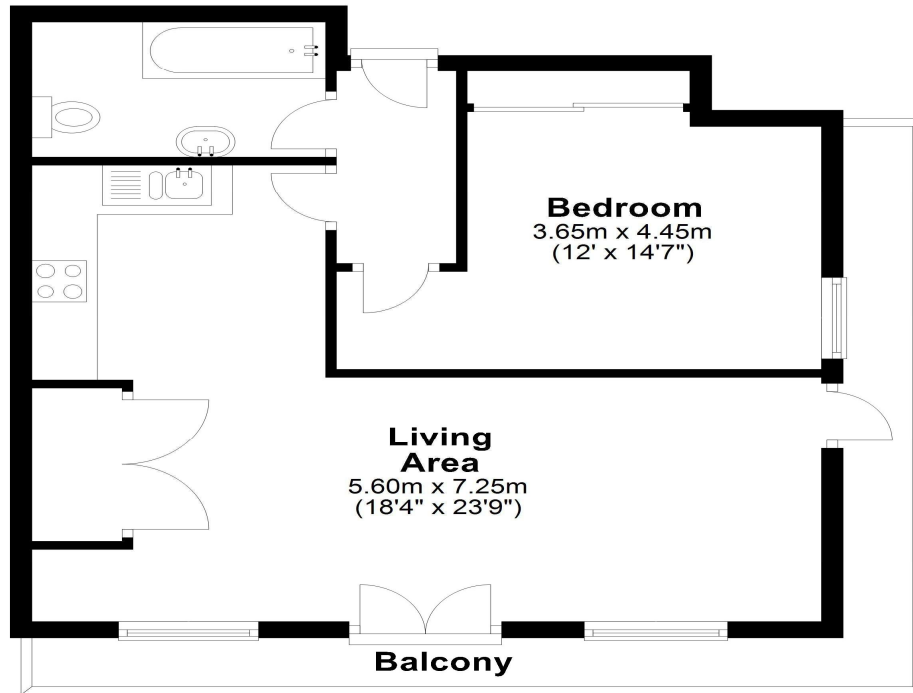
AVAILABLE 1 NOVEMBER 2024 -FURNISHED

Clarke Court, High Street, Egham, Surrey, TW20 9EY

FLOORPLAN

Second Floor

Approx. 49.8 sq. metres (535.5 sq. feet)



Total area: approx. 49.8 sq. metres (535.5 sq. feet)

EPC

Flat B Clarke Court 64 High Street EGHAM TW20 9EY		Energy rating B
Valid until 15 February 2033	Certificate number 9763-0002-0202-8537-3214	
Property type	Top-floor flat	
Total floor area	49 square metres	

Rules on letting this property

Properties can be let if they have an energy rating from A to E.
[You can read guidance for landlords on the regulations and exemptions.](#)

Energy rating and score

This property's energy rating is B. It has the potential to be B.
[See how to improve this property's energy efficiency.](#)

Score	Energy rating	Current	Potential
92+	A		
81-91	B	83 B	83 B
69-80	C		
55-68	D		
39-54	E		
21-38	F		
1-20	G		

The graph shows this property's current and potential energy rating.