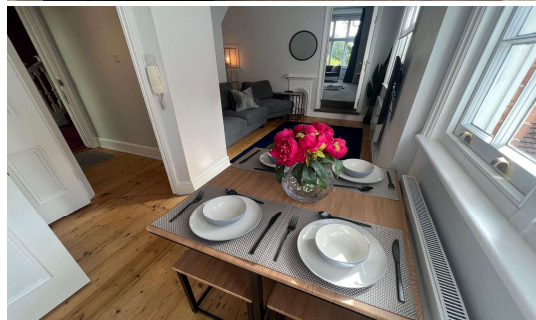
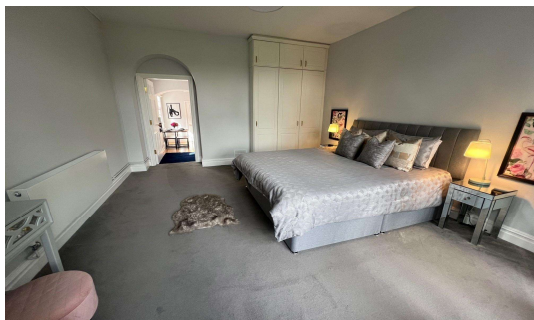




**Kinburn Drive, Englefield Green, TW20 0BD**

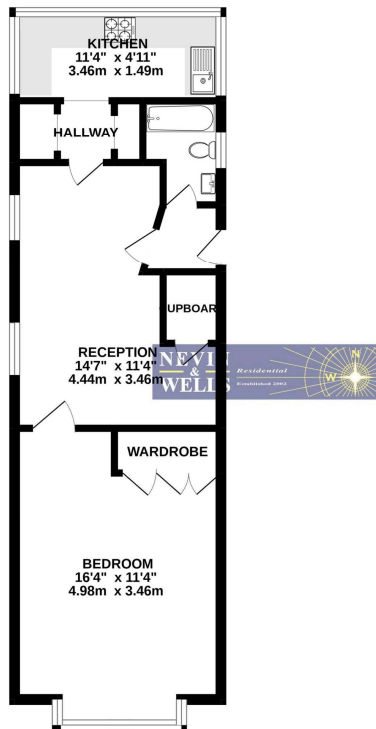
**£275,000 L/H**



Situated in a stunning tree lined and private lane and recently renovated, yet still only a twelve minute walk to High Street, Magna Square and mainline station is this first floor, one bedroom apartment in a converted manor house. In addition there is parking, mature communal gardens and the huge benefit of **NO ONWARD CHAIN**.

# Kinburn Drive, Englefield Green, Surrey, TW20 0BD

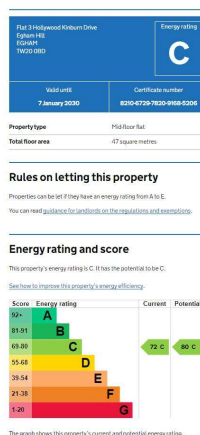
## FLOOR PLAN



Whilst every attempt has been made to ensure the accuracy of the floorplan contained here, measurements of doors, windows, rooms and any other items are approximate and no responsibility is taken for any error, omission or mis-statement. This plan is for illustrative purposes only and should be used as such by any prospective purchaser. The services, systems and appliances shown have not been tested and no guarantee as to their operability or efficiency can be given.  
Made with Nevego 62022

All measurements are approximate. Nevin & Wells Residential have not tested any systems or appliances.

## EPC



**COUNCIL TAX BAND:**

**LEASE:**

**GROUND RENT:**

**MAINTENANCE:**

**VIEWINGS:**

**C** - Runnymede Borough Council  
125 years from 10<sup>th</sup> November 2016 (awaiting written confirmation)  
Permanently frozen at £500 per annum (awaiting written confirmation)  
£1,650 per annum. (awaiting written confirmation)

By appointment with the clients selling agents, Nevin & Wells Residential on 01784 437 437 or visit [www.nevinandwells.co.uk](http://www.nevinandwells.co.uk)

