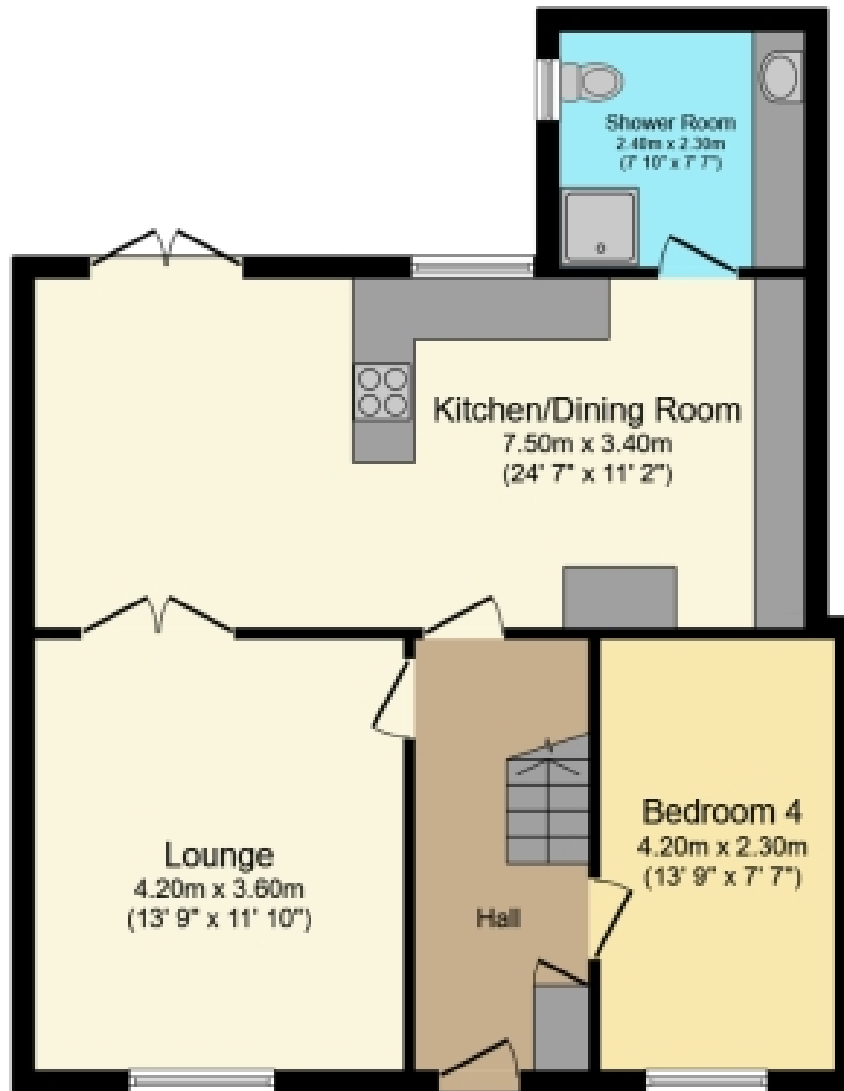




100 Leander Crescent, Renfrew

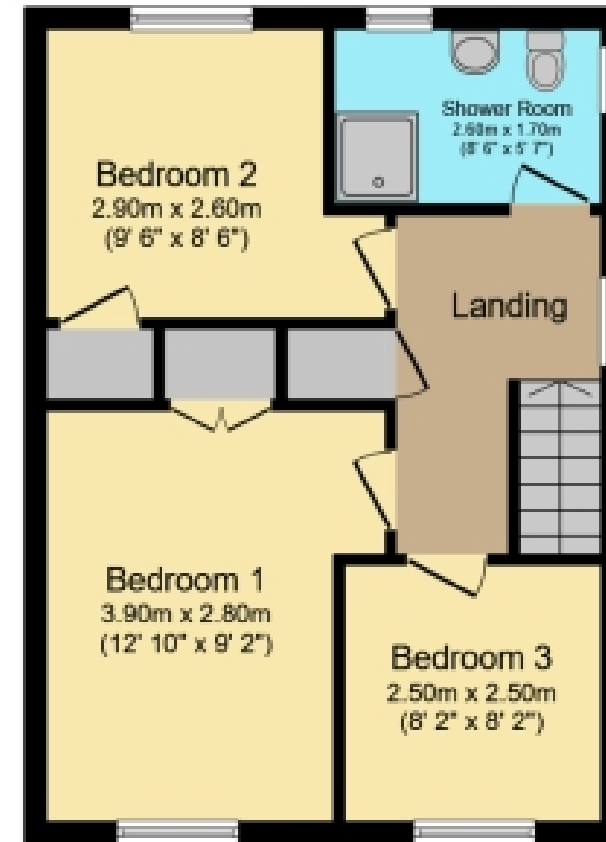
Offers Over £250,000





Ground Floor

Floor area 64.8 m² (697 sq.ft.)



First Floor

Floor area 41.6 m² (448 sq.ft.)

TOTAL: 106.4 m² (1,145 sq.ft.)

This floor plan is for illustrative purposes only. It is not drawn to scale. Any measurements, floor areas (including any total floor area), openings and orientations are approximate. No details are guaranteed, they cannot be relied upon for any purpose and do not form any part of any agreement. No liability is taken for any error, omission or misstatement. A party must rely upon its own inspection(s). Powered by www.Propertybox.io

THE PROPERTY

**** ABSOLUTE TURN-KEY CONDITION - STUNNING FAMILY HOME ** MULTI CAR MONOBLOCK DRIVEWAY ** ULTRA MODERN KITCHEN ** WET ROOM **** Please contact your personal estate agents, The Property Boom, for more information and a copy of the Home Report.

Welcome to No. 100 Leander Crescent in Renfrew. This fantastic semi detached property is a truly desirable family home in a popular locale.

To the front of the property you will find a multi car monoblock driveway, leading up to the grey stylish upvc front door.

Entering the property itself, you are presented with a welcoming entrance hallway, stylishly decorated with soft and bright tones. The family lounge benefits from masses of natural light, pouring in through the large picture windows. The lounge features 2 glass panelled doors leading you to the modern dining kitchen.

In the kitchen you will find stylish matt charcoal coloured wall and base mounted cabinetry, with full size integrated fridge and freezer. There is plentiful storage space and counter top space plus the breakfast bar, giving the kitchen a lovely sociable feel. There is a range of other convenient integrated appliances, comprising of an electric hob, extractor fan and oven/grill.

On the ground floor is a shower room, boasting a w.c., wash hand basin and a walk in corner shower. There is also space for utilities such as a washing machine and tumble dryer. Completing the ground floor is the fourth bedroom, which is currently being utilized as a playroom by the current owners.

On the first floor of the property, you will find three generously proportioned double bedrooms. Bedrooms 1 and 2 both have the added benefit of built in storage solutions. The wet room consists of a w.c., wash hand basin and an over-head shower.

To the rear of the property, is a fully enclosed garden. It boasts a paved area, making it the perfect space for entertaining guests on a warm summers' day.

The property further benefits from gas central heating and double glazing throughout.

Renfrew has an eclectic range of shops to include the popular Intu Braehead and Soar which are just a 5-minute drive away. Glasgow International Airport and the Queen Elizabeth University Hospital are a short drive away and the nearby M8 motorway provides quick and easy access to Glasgow City Centre and further afield. For more detailed information on schooling, please use The Property Boom's catchment and performance tool on our website.

We would highly recommend an early viewing of this fabulous accommodation as we have no doubt it will be very popular. Viewing is by appointment - please contact your personal estate agents, The Property Boom to arrange a viewing or for any further information and a copy of the Home Report. Any areas, measurements or distances quoted are approximate and floor Plans are only for illustration purposes and are not to scale.

WOULD YOU LIKE A FREE DETAILED VALUATION OF YOUR OWN PROPERTY?

TAKE ADVANTAGE OF OUR DECADES OF EXPERIENCE AND GET YOUR FREE PROPERTY VALUATION FROM OUR FRIENDLY AND APPROACHABLE TEAM. WE CUT THROUGH THE JARGON AND GIVE YOU SOLID ADVICE ON HOW AND WHEN TO SELL YOUR PROPERTY.

THESE PARTICULARS ARE ISSUED IN GOOD FAITH BUT DO NOT CONSTITUTE REPRESENTATIONS OF FACT OR FORM PART OF ANY OFFER OR CONTRACT.

www.thepropertyboom.com
70 West Regent Street, Glasgow, G2 2QZ
Tel: 0333 900 9089 / Email: smile@thepropertyboom.com