



FLAT 11, GROVE HOUSE

Cornwallis Grove, Bristol, BS8 4DE

Flat 11, Grove House

Cornwallis Grove, Bristol, BS8 4DE

An impressive and generously proportioned first-floor flat, boasting shared access to beautifully manicured communal gardens and an allocated parking space.

* ALLOCATED PARKING SPACE DIRECTLY OPPOSITE * ACCESS TO WELL-MAINTAINED COMMUNAL GARDENS * TURN-KEY ACCOMMODATION * OPEN PLAN KITCHEN AND DINING * SPACIOUS AND LIGHT-FILLED THROUGHOUT * VISITOR PARKING AVAILABLE * IDEALLY LOCATED JUST MOMENTS FROM CLIFTON VILLAGE * EPC: D

Situation

Nestled on Cornwallis Grove, Grove House is just moments away from the vibrant heart of Clifton Village, celebrated for its diverse range of independent boutiques, bars, coffee shops, and renowned dining options, including The Ivy Clifton, Côte Brasserie, and The Hotel du Vin at The Avon Gorge.

Originally constructed in 1794, this property boasts elegant mid-Georgian architecture, with distinctive limestone ashlar and stucco façades. Extended around 1820, the building has undergone several transformations before its conversion into luxury flats approximately 40 years ago. Both the structure and its surrounding gardens hold historical significance, once being part of the esteemed 'La Retraite' private school for girls.

Bristol is well-regarded for its esteemed independent schools and two world-class universities. Clifton College is located less than a mile away, while Bristol Airport is just 8 miles away, and Bristol Temple Meads train station is only 2.5 miles away, offering convenient links to London and mainland Europe.

For Sale - Leashold

This charming residence within Grove House combines timeless elegance with modern amenities, perfectly positioned to enjoy stunning south-easterly views from its elevated location.

Grove House is an outstanding property that artfully balances classical charm with modern amenities, ideal for those in search of a refined living environment. The space would be ideally suited for a young professional or couple looking for safe, modern living in the heart of one of Bristol's most sought-after neighbourhoods.





A welcoming hallway offers ample space to store coats and shoes, featuring a generous utility cupboard housing a Drayton water tank with electric operation and a 'Samsung' washer-dryer.

At the end of the hallway, the spacious dual-aspect reception room boasts engineered oak floorboards and is bathed in natural light from four large sash windows, offering spectacular south-easterly views. This room creates an inviting space for both relaxation and entertaining.

The kitchen is tastefully appointed with a range of wall and base-mounted units, granite worktops, a durable tiled floor, and integrated 'Miele' appliances, including an electric hob, oven, 'Bosch' dishwasher, and fridge-freezer. A granite tile splashback adds both practicality and style.

The property includes two double bedrooms, each benefitting from natural light through large sash windows. The primary bedroom also features functioning shutters, enhancing privacy and offering a tranquil retreat.

Between the bedrooms, the fully tiled bathroom includes a panelled bath with an overhead shower, a stylish sink, and a unit with a modern terrazzo-tiled feature wall, adding a chic, contemporary finish.

Outside

Residents of Grove House enjoy access to a beautifully landscaped communal garden, just a short walk from the building's entrance, meticulously maintained to provide a peaceful and picturesque setting.

Directly opposite Grove House's entrance, there is an allocated parking space, alongside several visitor bays, ensuring convenient parking options for both residents and their guests.

Services

Electrical heating system, Mains water, electricity and drains. Broadband and telephone subject to contract with supplier.

Local Authority

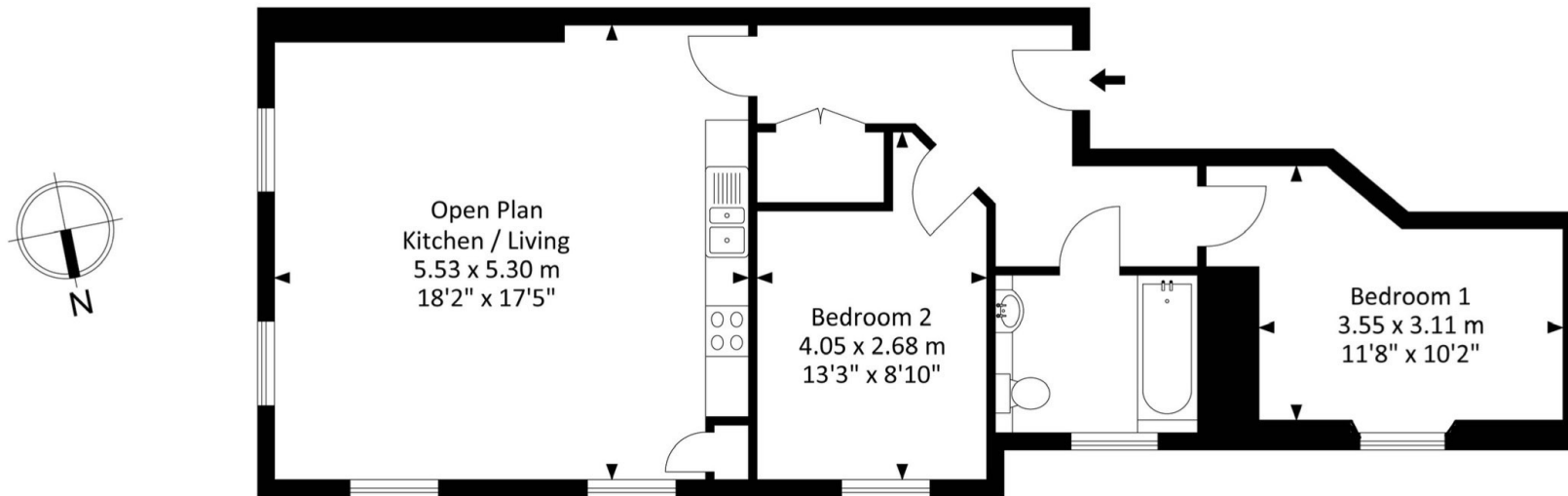
Bristol City Council, Tel: 0117 922 2000
Council Tax Band: E

Directions: Postcode: BS8 4DE



Grove House, Clifton, Bristol BS8 4DE

Approx. Gross Internal Area
697.70 Sq.Ft - 64.80 Sq.M



For illustrative purposes only. Not to scale.
Whilst every attempt has been made to ensure accuracy of the floor plan all measurements are approximate and no responsibility is taken for any error, omission or measurement.



Rupert Oliver
rupert@rupertoliver.co.uk
0117 452 3555
07780 905 200

14 Waterloo Street,
Clifton, Bristol,
BS8 4BT

rupertoliver.co.uk



clear and effective property sales



0117 452 3555
home@rupertoliver.co.uk
14 Waterloo Street, Clifton, Bristol BS8 4BT
rupertoliver.co.uk



IMPORTANT NOTICE Rupert Oliver Limited gives no notice that: 1. These particulars do not constitute an offer or contract or part thereof. 2. All descriptions, photographs and plans are for guidance only and should not be relied upon as statements or representations of fact. All measurements are approximate and not necessarily to scale. Any prospective purchaser must satisfy themselves of the correctness of the information within the particulars by inspection or otherwise. 3. Rupert Oliver Limited does not have any authority to give any representations or warranties whatsoever in relation to this property (including but not limited to planning/building regulations), nor can it enter into any contract on behalf of the Vendor. 4. Rupert Oliver Limited does not accept responsibility for any expenses incurred by prospective purchasers in inspecting properties which have been sold, let or withdrawn. 5. If there is anything of particular importance to you, please contact Rupert Oliver Limited and we will try to have the information checked for you.