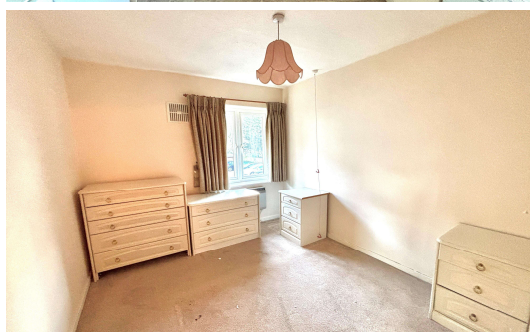




Orchid Court, Egham, Surrey, TW20 9HA

£150,000 L/H



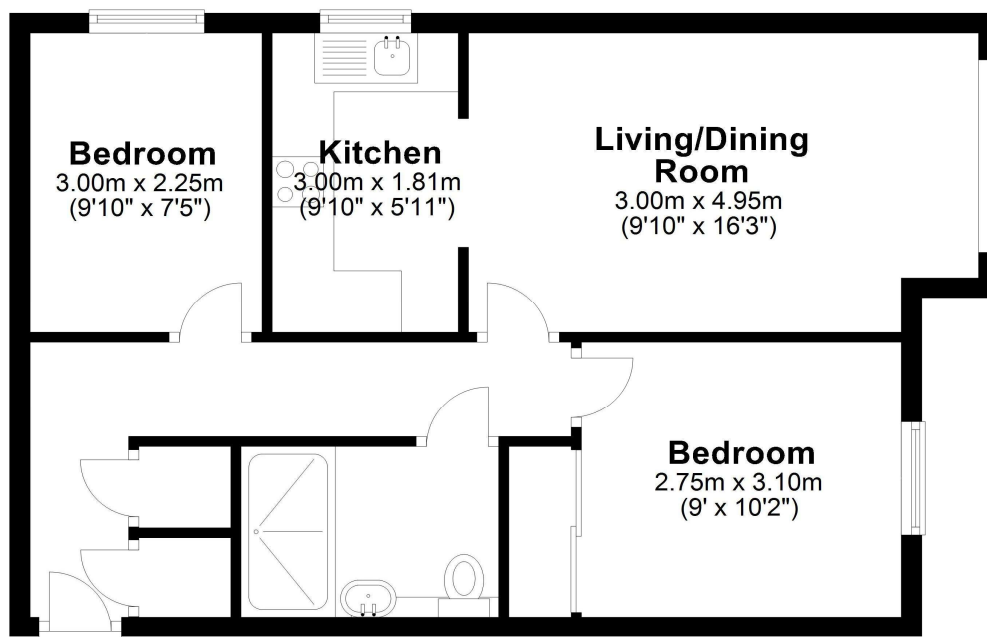
Being sold with a share of the leasehold is this two bedroom warden assisted retirement apartment for the over 55's. the property is on the first floor with a lift service, communal lounge, gorgeous communal gardens and resident parking. Located just off Egham High Street with major supermarkets, restaurants and mainline station to Waterloo. No onward chain.

Orchid Court, Egham, Surrey, TW9HA

FLOOR PLAN

First Floor

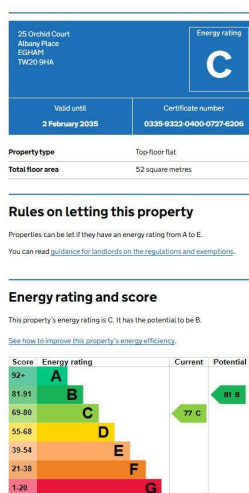
Approx. 51.3 sq. metres (552.2 sq. feet)



Total area: approx. 51.3 sq. metres (552.2 sq. feet)

All measurements are approximate. Nevin & Wells Residential have not tested any systems or appliances.

EPC



COUNCIL TAX BAND:

D - Runnymede Borough Council

LEASE:

999 years from 2015 (awaiting written confirmation)

SERVICE CHARGES:

£3500 per annum (awaiting written confirmation)

VIEWINGS:

By appointment with the clients selling agents,
Nevin & Wells Residential on 01784 437 437 or
visit www.nevinandwells.co.uk

