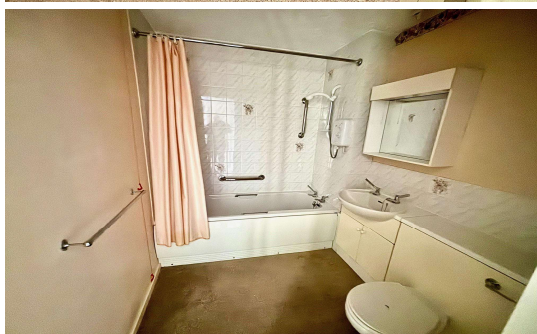
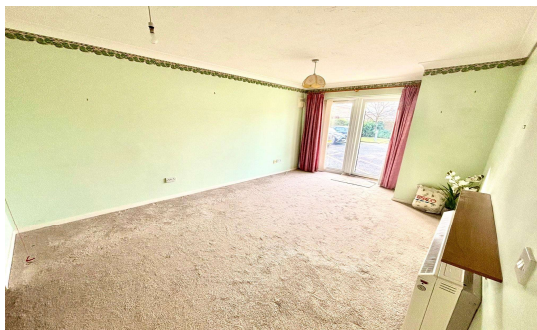




Orchid Court, Egham, TW20 9HA

£90,000 Leasehold



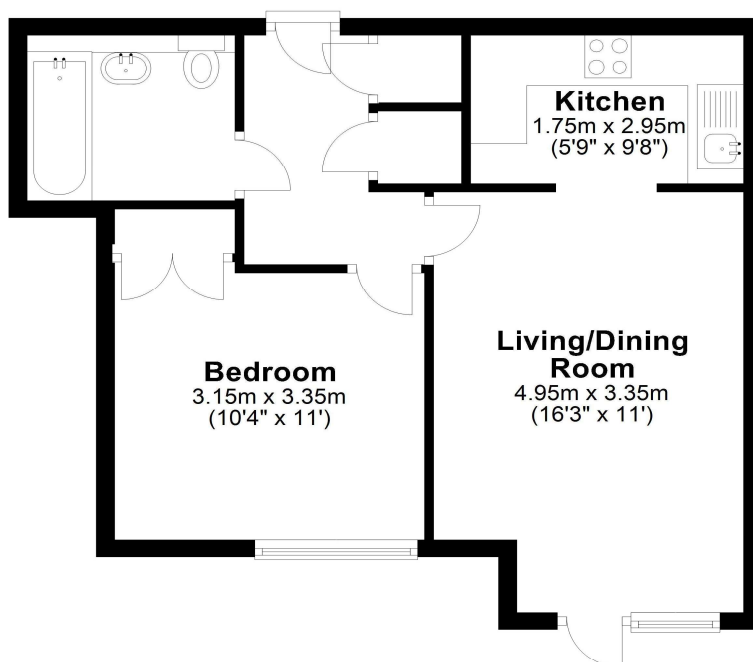
Set in a retirement development for the over 60's is this one bedroom on ground floor apartment, situated within walking distance of Egham High Street and amenities. Benefits include double glazing, lounge/dining room, kitchen, replacement shower room, electric heating, security entry phone system and house manager. There are neatly kept communal gardens and visitors parking as well as a residents lounge and guest suite. **NO ONWARD CHAIN.** Share of freehold

Orchid Court, Albany Place, Egham, Surrey, TW20 9HA

FLOOR PLAN

Ground Floor

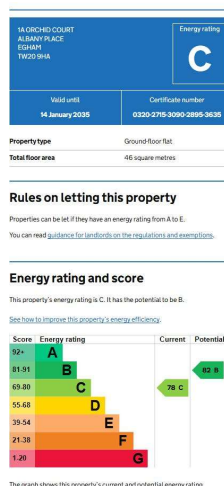
Approx. 44.4 sq. metres (477.8 sq. feet)



Total area: approx. 44.4 sq. metres (477.8 sq. feet)

All measurements are approximate. Nevin & Wells Residential have not tested any systems or appliances.

EPC



COUNCIL TAX BAND:

C - Runnymede Borough Council

LEASE:

999 years from 2015 (awaiting written confirmation)

SERVICE CHARGE:

£3500 per annum. (awaiting written confirmation)

VIEWINGS:

By appointment with the clients selling agents,
Nevin & Wells Residential on 01784 437 437 or
visit www.nevinandwells.co.uk

