



Guide Price £400,000

2 Bedroom Flat for sale

6 Innovo Apartments 27 Elmcroft Road, Orpington



EweMove
SALES AND LETTINGS



Overview

Stunning two-bedroom apartment for sale in Orpington, offers contemporary living at its finest. Located within a secure, gated development, the property provides allocated parking and easy access to a wealth of local amenities.



Key Features

- Gated Development
- Allocated Parking
- 1 mile from Orpington Station
- First Floor Views
- Heart of Orpington
- Contemporary Living Space
- Well-Maintained Grounds
- Engineered Wooden Flooring
- Contemporary Modern Kitchen
- Fully Integrated Appliances



Situated in the heart of Orpington, this stunning two-bedroom apartment offers contemporary living at its finest. Located within a secure, gated development, the property provides allocated parking and easy access to a wealth of local amenities.

One of only twelve naturally bright and spacious apartments, benefiting from well-maintained gated grounds. Internal space boasting from engineered wood flooring throughout and contemporary modern kitchen with fully integrated appliances.

The apartment boasts a bright and spacious open-plan living area, designed for modern comfort and style. The well-proportioned bedrooms offer generous storage, while the first-floor positioning provides delightful views. With its sleek, contemporary design, this home perfectly balances functionality and elegance.

Just one mile from Orpington Station, the apartment is ideally situated for commuters. A fantastic selection of restaurants, pubs, and bars is within walking distance, along with the nearby Odeon cinema for entertainment. Nature lovers will appreciate the proximity to the beautiful Priory Gardens park, perfect for leisurely walks and outdoor relaxation.

This exceptional property combines convenience, style, and comfort - a perfect choice for those seeking modern living in a vibrant, well-connected community.

Lounge Diner
13' 9" x 13' 5" (4.20m x 4.10m)

Kitchen
10' 2" x 12' 1" (3.10m x 3.70m)

Hallway

Bathroom



Bedroom 1

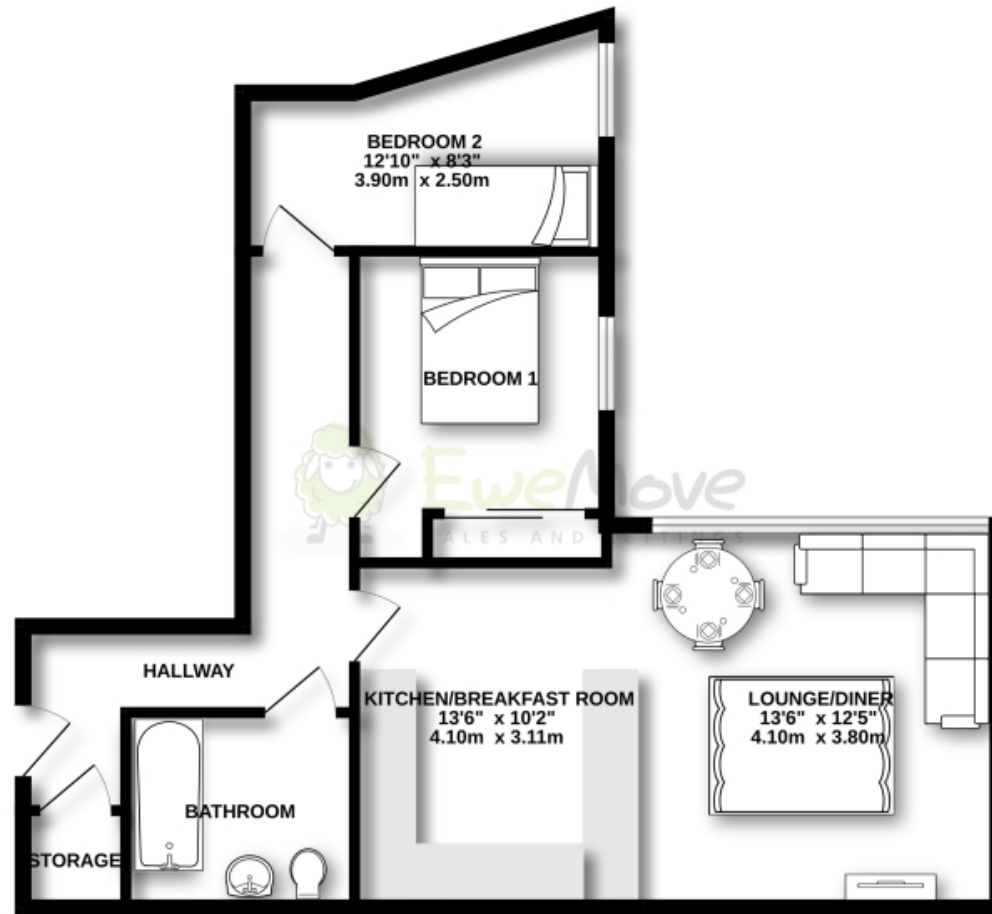
8' 10" x 10' 9" (2.70m x 3.30m)

Bedroom 2

12' 9" x 8' 2" (3.90m x 2.50m)

Floorplans

GROUND FLOOR
641 sq.ft. (59.6 sq.m.) approx.



TOTAL FLOOR AREA : 641 sq.ft. (59.6 sq.m.) approx.

Whilst every attempt has been made to ensure the accuracy of the floorplan contained here, measurements of doors, windows, rooms and any other items are approximate and no responsibility is taken for any error, omission or mis-statement. This plan is for illustrative purposes only and should be used as such by any prospective purchaser. The services, systems and appliances shown have not been tested and no guarantee as to their operability or efficiency can be given.
Made with Metropix ©2025

Floorplans

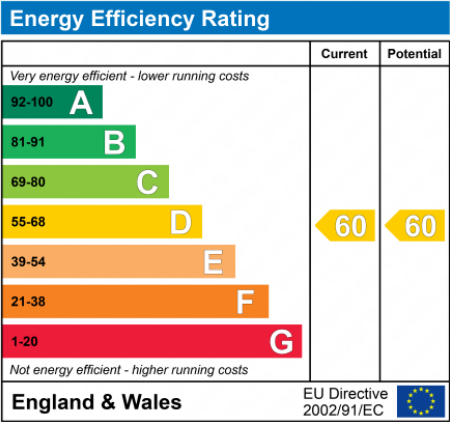
GROUND FLOOR
641 sq.ft. (59.6 sq.m.) approx.



TOTAL FLOOR AREA : 641 sq.ft. (59.6 sq.m.) approx.

For illustrative purposes only. Decorative finishes, fixtures, fittings and furnishings do not represent the current state of the property. Measurements are approximate. Not to scale.

Made with Metropix © 2025





Marketed by Ewemove Orpington & Chelsfield

07305 306 115 (24/7)
chelsfield@ewemove.com



EweMove
SALES AND LETTINGS