



Guide Price £330,000

3 Bedroom Bungalow for sale

88 Thetford Road, Watton, Thetford





Overview

Looking for your new pad within easy reach of your daily essentials? This wonderful 4-bedroom bungalow could be 'the one'! With bright, flowing spaces and a sunny south-facing garden, it's ready to become your new happy place. [Click here for further details...](#)



Key Features

- Chain Free
- Enclosed South-Facing Garden
- Detached Bungalow with Substantial Plot
- Ample Driveway Parking and Garage
- Gas Central Heating and Ample Built-In Storage
- Easy Reach of Thetford Forrest, Wymondham and Norwich
- Walking Distance to Tesco, Market, Shops and Bus Stops





Welcome to Thetford Road, Watton. This 2015 build by renowned Hopkins Homes has been a much-loved abode since new. Secluded on the edge of a small and tranquil development, within walking distance of all local amenities, you will feel buffered from the outside world.

Greeted by an ample frontage, rarely available with modern homes, there is comfortable parking and a single garage well-placed for the everyday. A storm porch leads into a roomy hallway complete with storage. From here, a logical layout sets living spaces to one side and bedrooms to the other, with no dark and cramped corridors to contend with. Boasting freshly laid carpets throughout and a clear footprint, it's easy to imagine how this home will work for you.

The garden showcases a nurtured and mature space where many a day has been spent soaking up the sunshine and observing the seasons. Complete with a centrally placed sunroom off the kitchen-breakfast room, this garden can be enjoyed from the indoors too. Or, seated under the awning with a good beverage and book.

Walking distance to local amenities, shops and eateries, you are only a stroll or quick drive from daily essentials and social events. The local market is every Wednesday, and the annual Wayland Agricultural Show is a fun event to look forward to – both strong links to Watton's reaching history. Wymondham and Attleborough are a 20-minute drive providing train links to Norwich, Cambridge and London. The great Thetford Forest is also a short distance away.

Book your private viewing today and discover how this wonderful home could perfectly suit your lifestyle. We're ready to show you around at a time that works best for you!

What3Words: [///tastings.melts.change](https://www.what3words.com/#!/tastings.melts.change)



Kitchen-Diner

14' 1" x 9' 2" (4.30m x 2.80m)

Vinyl flooring, double-glazed window with roller blind, tiled splashback, fitted base and wall-mounted units, integrated double electric oven, newly fitted gas hob, extractor hood and washing machine, freestanding fridge-freezer, coving, hardwired ceiling light, multiple sockets and radiator.

Lounge

20' 0" x 18' 4" (6.10m x 5.60m)

Newly fitted carpet, dual double-glazed windows to the front aspect and double-glazed French doors into the garden (all with curtain rails), two hardwired ceiling lights, coving, TV aerial, consumer unit, multiple sockets and two radiators.

Sun Room

9' 10" x 9' 0" (3.00m x 2.75m)

Vinyl flooring, 2015 addition, double-glazed and ceiling light.

Bedroom One

12' 7" x 12' 3" (3.85m x 3.75m)

Newly fitted carpet, double-glazed with curtain rail and curtains, built-in double wardrobe, multiple sockets, radiator, coving, TV aerial, ceiling light and loft access.

Ensuite Shower Room

6' 7" x 5' 10" (2.01m x 1.79m)

Vinyl flooring, corner shower tray with glass doors and tiled walls, wash hand basin with tiled splashback, toilet, coving, ceiling light and radiator.

Bedroom Two

11' 1" x 8' 6" (3.40m x 2.60m)

Newly fitted carpet, double-glazed window with curtain rail and curtains, coving, hardwired ceiling light, built-in wardrobe, multiple sockets, TV aerial and radiator.

Bedroom Three

8' 6" x 6' 6" (2.60m x 2.00m)

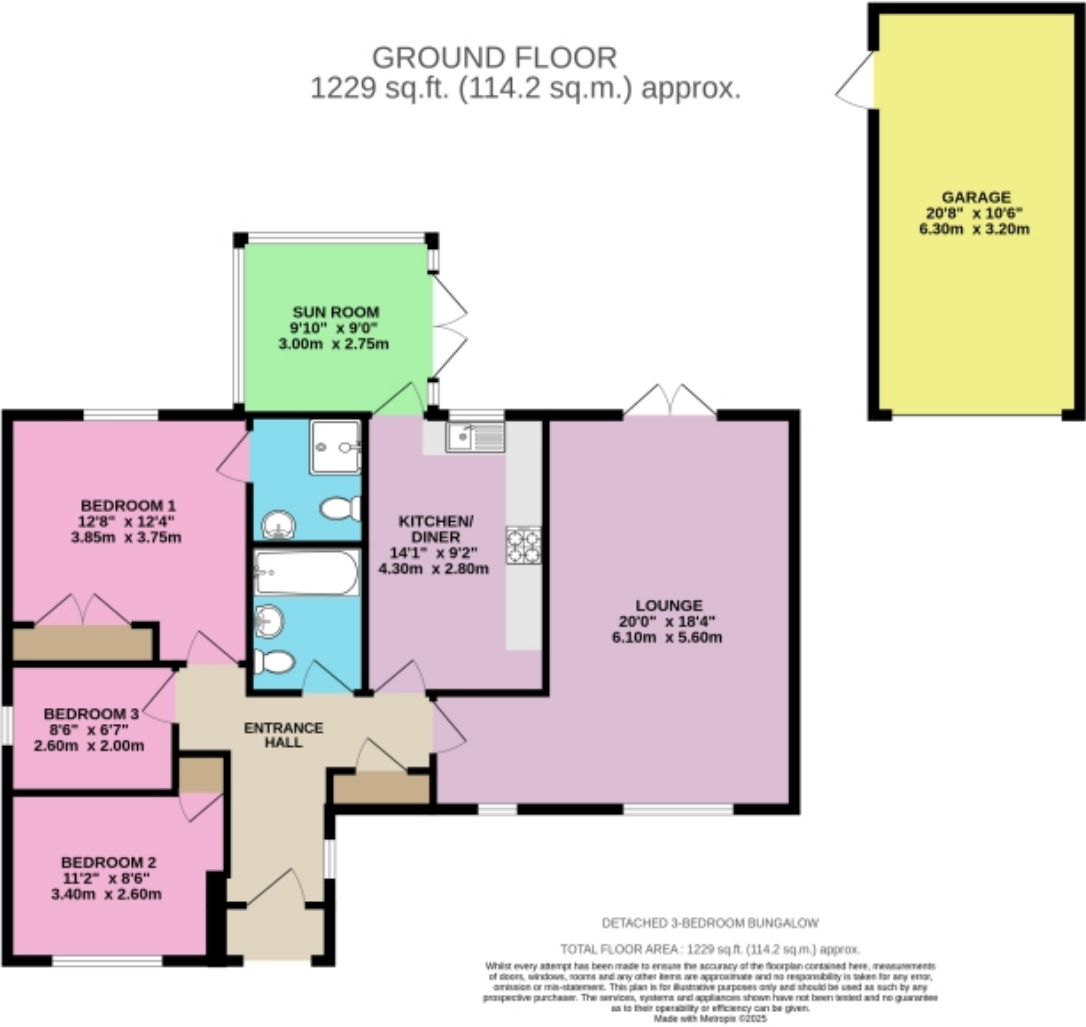
Newly fitted carpets, double-glazed window with curtain rail and curtains, coving, multiple sockets, TV aerial, ceiling light and radiator.

Bathroom

7' 6" x 5' 10" (2.30m x 1.80m)

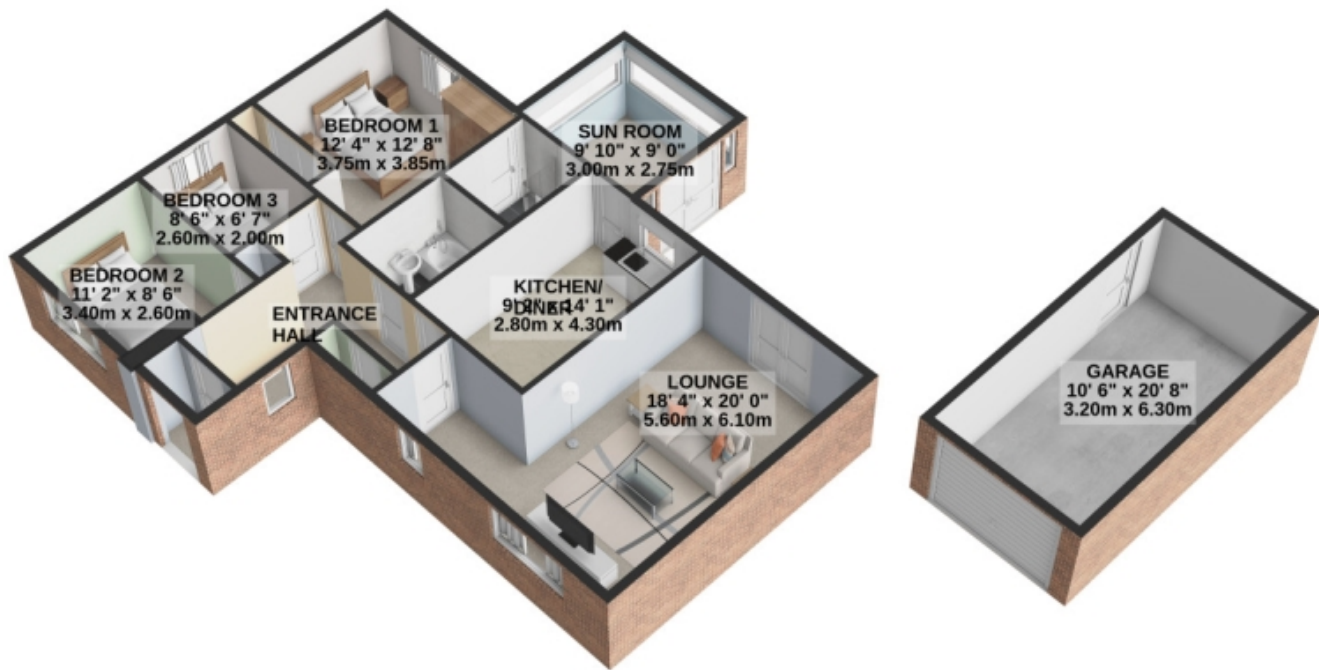
Vinyl flooring, bath with shower nozzle, half wall tiling, wash hand basin, toilet, ceiling light, coving, shaver socket and radiator.

Floorplans



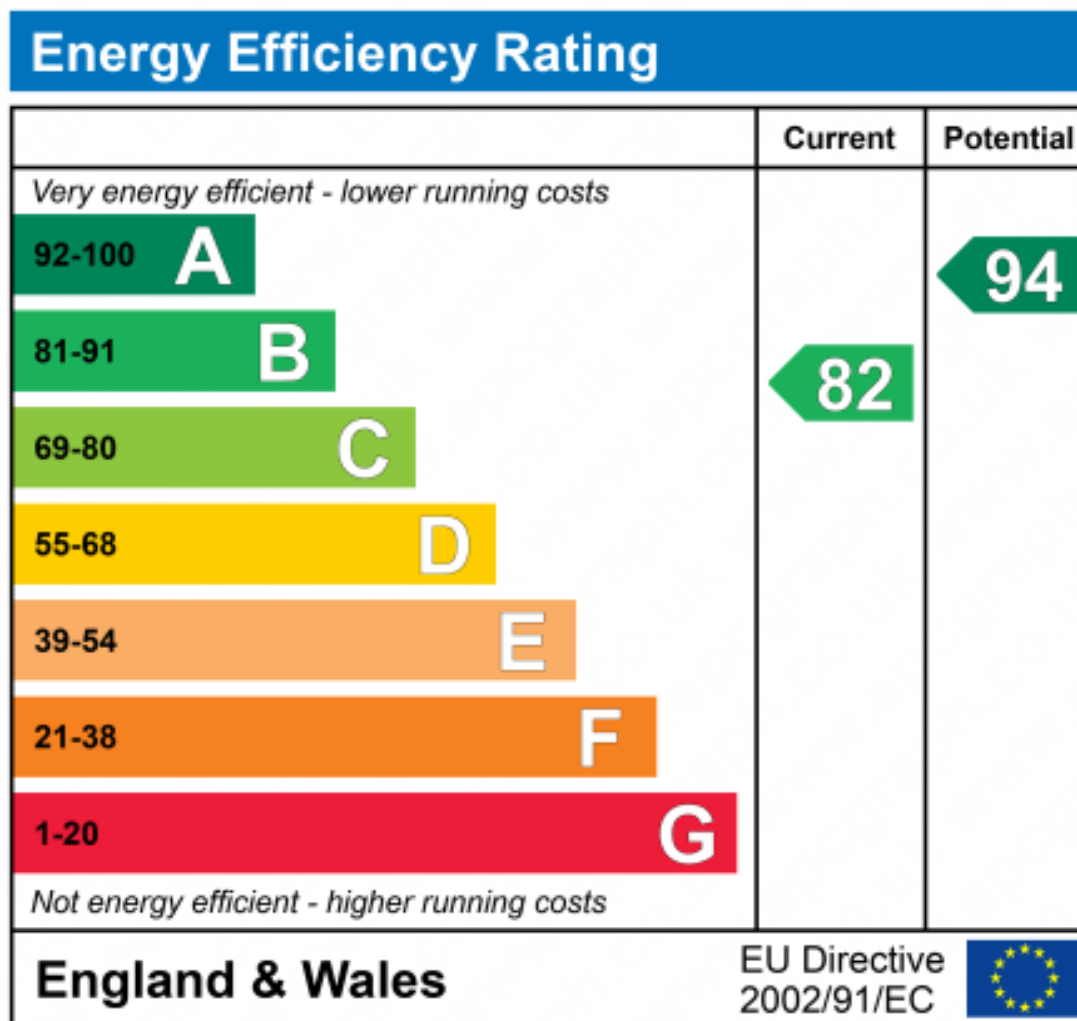
Floorplans

GROUND FLOOR
1229 sq.ft. (114.2 sq.m.) approx.



DETACHED 3-BEDROOM BUNGALOW
TOTAL FLOOR AREA : 1229 sq.ft. (114.2 sq.m.) approx.

For illustrative purposes only. Decorative finishes, fixtures, fittings and furnishings do not represent the current state of the property. Measurements are approximate. Not to scale.
Made with Metropix © 2025





Marketed by EweMove Wymondham

01953 665 785 (24/7)
wymondham@ewemove.com

