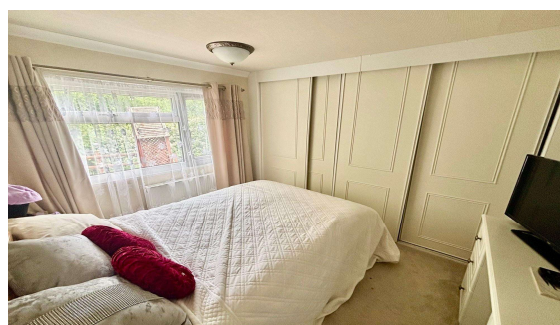
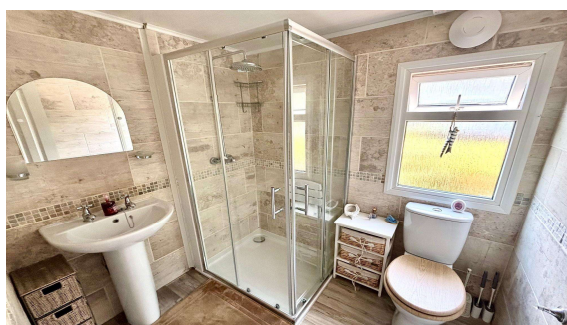
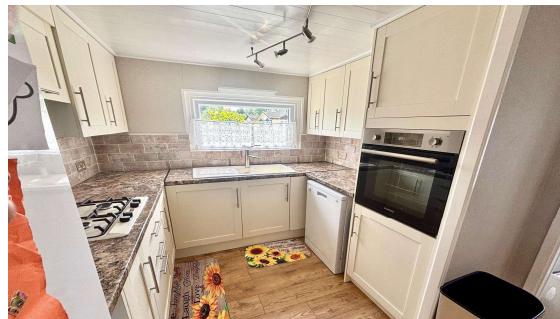
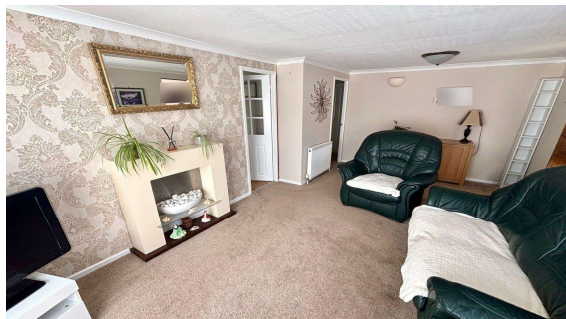




Burway Crescent, Chertsey, Surrey, KT16 8QE

£250,000 F/H



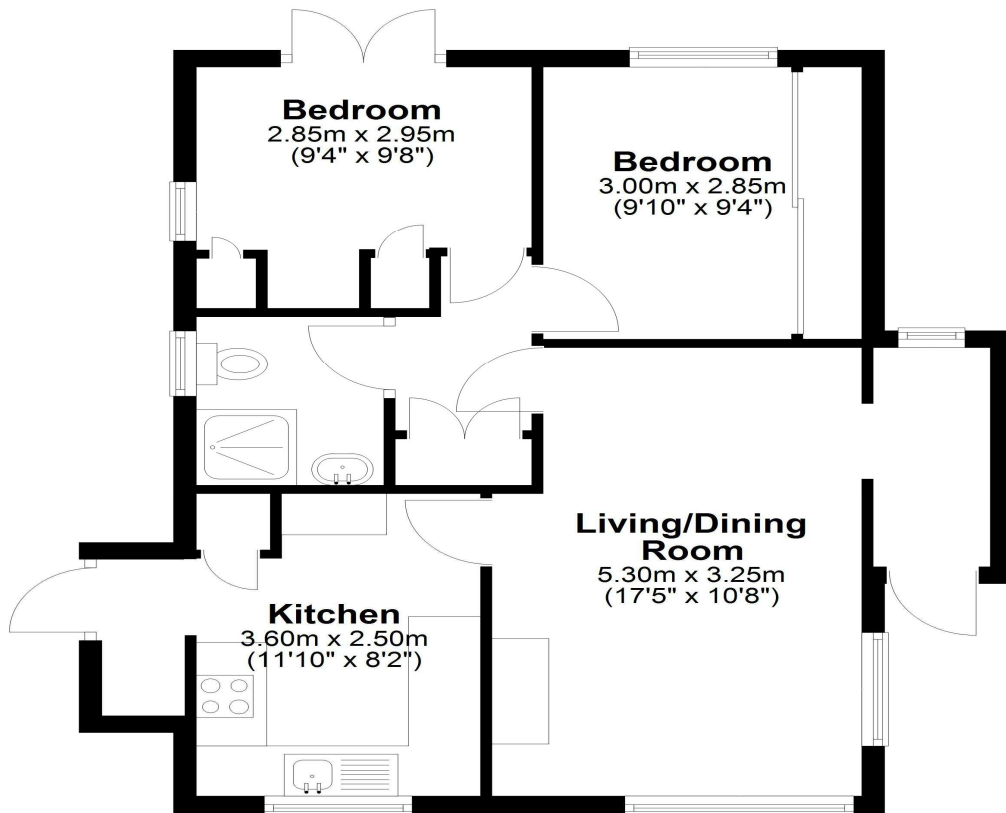
Overlooking the Abbey River is this very well presented two bedroom double unit park home with generous garden areas and driveway providing off street parking for two vehicles. The well-presented accommodation comprises entry porch, lounge/dining room, recently fitted kitchen and recently installed luxury shower room. Further benefits include gas central heating and double glazing throughout.

Burway Crescent, Chertsey, Surrey, KT16 8QE

FLOOR PLAN

Ground Floor

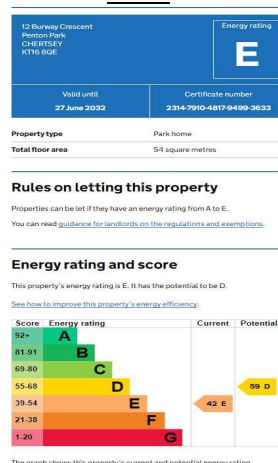
Approx. 54.6 sq. metres (587.9 sq. feet)



Total area: approx. 54.6 sq. metres (587.9 sq. feet)

All measurements are approximate. Nevin & Wells Residential have not tested any systems or appliances.

EPC



COUNCIL TAX BAND:

A - Runnymede Borough Council

SITE FEE:

Approx. £165.68 per month (awaiting written confirmation)

VIEWINGS:

By appointment with the clients selling agents,
Nevin & Wells Residential on 01784 437 437 or
visit www.nevinandwells.co.uk

