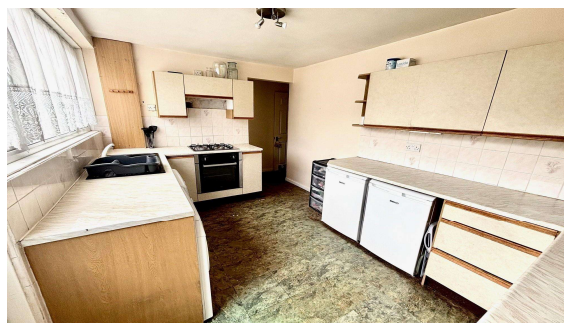




Cumberland Road, Ashford, TW15 3DB

£425,000 F/H



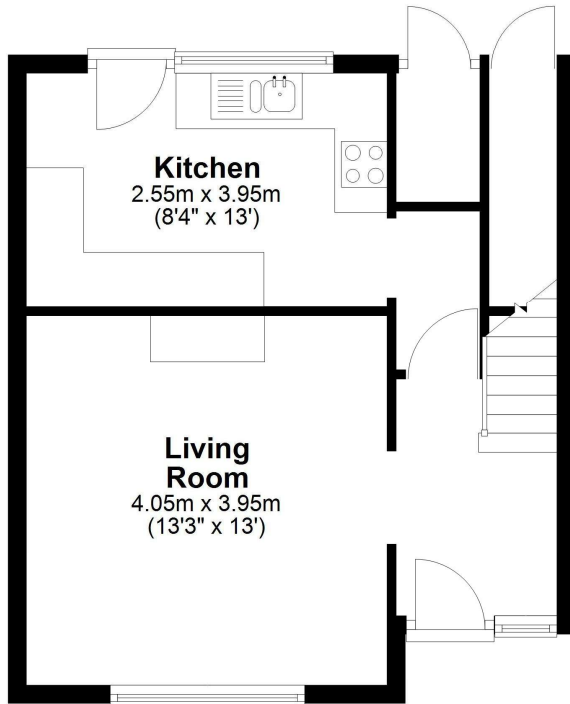
A deceptive three bedroom terrace property, ideally positioned within a popular residential road just a short walk to Ashford High Street and train station. Accommodation comprises entrance hallway, living room, kitchen/breakfast room, first floor bathroom, private rear garden and off street parking for up to four cars. No onward chain.

Cumberland Road, Ashford, Middlesex, TW15 3DB

FLOOR PLAN

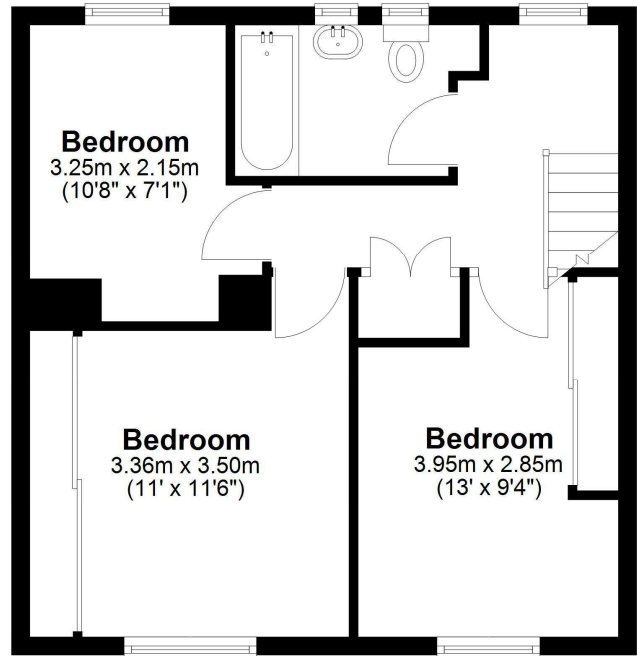
Ground Floor

Approx. 37.5 sq. metres (403.7 sq. feet)



First Floor

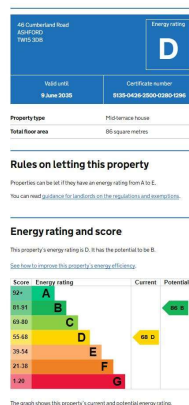
Approx. 43.4 sq. metres (467.4 sq. feet)



Total area: approx. 80.9 sq. metres (871.1 sq. feet)

All measurements are approximate. Nevin & Wells Residential have not tested any systems or appliances.

EPC



COUNCIL TAX BAND:

D - Spelthorne Borough Council

VIEWINGS:

**By appointment with the clients selling agents,
Nevin & Wells Residential on 01784 437 437 or
visit www.nevinandwells.co.uk**

