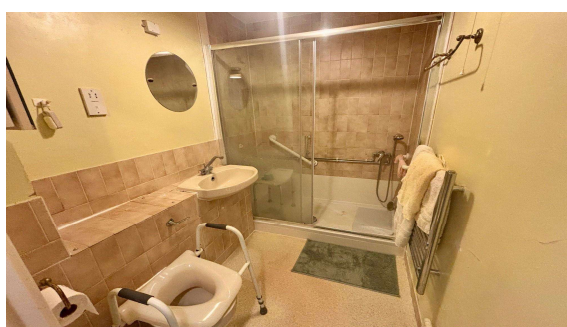
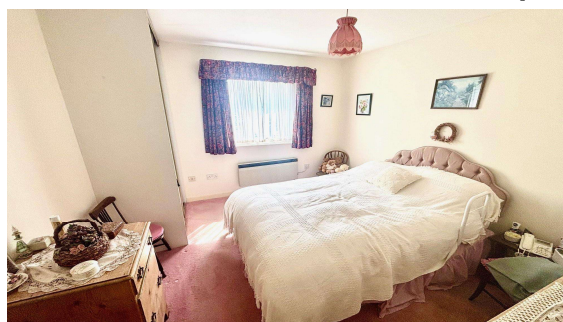




**Fairhaven Court, Egham, Surrey, TW20 9DH**

**£150,000 L/H**



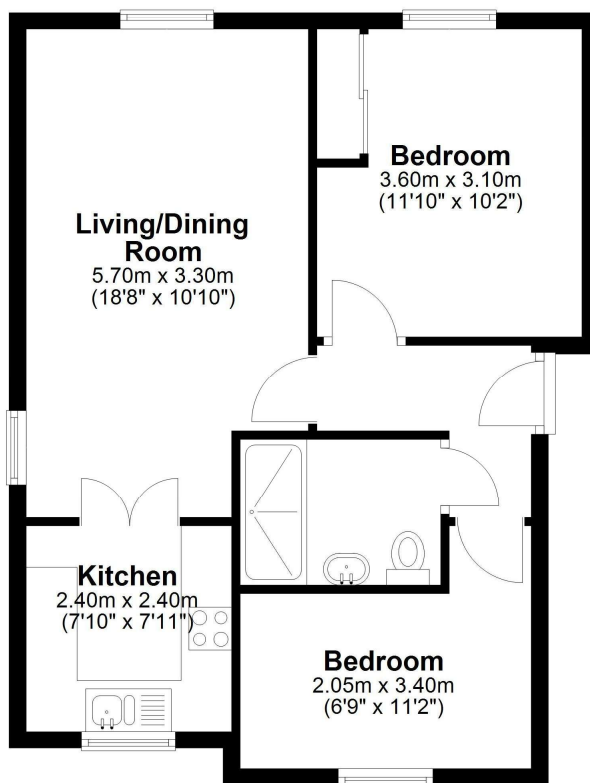
Positioned in a quiet residential cul-de-sac is this two bedroom first floor retirement maisonette. Benefits include spacious lounge/diner, replacement shower room, kitchen, double glazing, electric heating, residents parking and a communal social lounge. Available to ladies over 55 and gentlemen over 60 years old. Close to High Street, Magna Square, library and train station. No onward chain. To be sold with extended lease, subject to offer

# Fairhaven Court, Egham, Surrey, TW20 9DH

## FLOOR PLAN

### **First Floor**

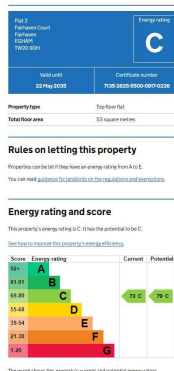
Approx. 52.0 sq. metres (560.1 sq. feet)



Total area: approx. 52.0 sq. metres (560.1 sq. feet)

All measurements are approximate. Nevin & Wells Residential have not tested any systems or appliances.

## EPC



### COUNCIL TAX BAND:

D - Runnymede Borough Council

### LEASE:

65 years unexpired (to be sold with extended lease subject to offer).

### SERVICE CHARGE:

Approx. £3000 per annum including ground rent and Block insurance (We await written confirmation).

### VIEWINGS:

By appointment with the clients selling agents, Nevin & Wells Residential on 01784 437 437 or visit [www.nevinandwells.co.uk](http://www.nevinandwells.co.uk)

