

St Jude's Road, TW20 0BT

O.I.R.O £350,000 F/H



Built circa 1900 is this character semi- detached residence with off street parking for one vehicle. The property is in need of modernisation throughout but offers an excellent opportunity to extend or loft convert (Subject to planning permission). accommodation comprises entrance hall, two reception rooms, first floor bathroom and a private rear garden. No onward chain.

St Judes Road, Englefield Green, Surrey, TW20 0BT

FLOOR PLAN

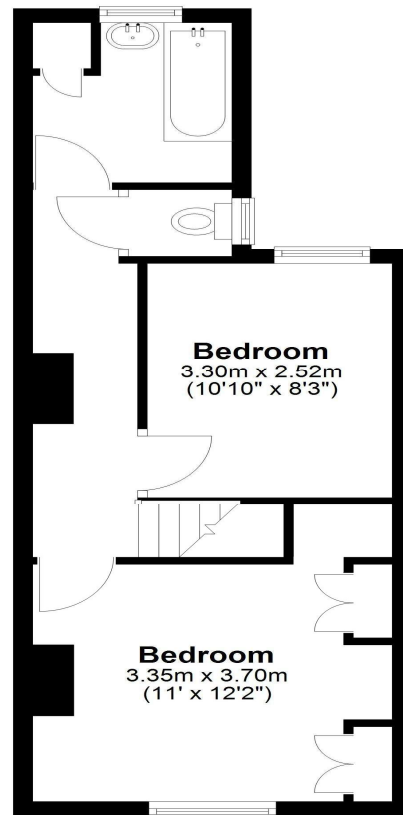
Ground Floor

Approx. 35.1 sq. metres (377.7 sq. feet)



First Floor

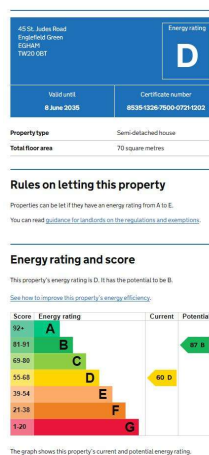
Approx. 35.1 sq. metres (377.7 sq. feet)



Total area: approx. 70.2 sq. metres (755.5 sq. feet)

All measurements are approximate. Nevin & Wells Residential have not tested any systems or appliances.

EPC



COUNCIL TAX BAND:

D - Runnymede Borough Council

VIEWINGS:

**By appointment with the clients selling agents,
Nevin & Wells Residential on 01784 437 437 or
visit www.nevinandwells.co.uk**

