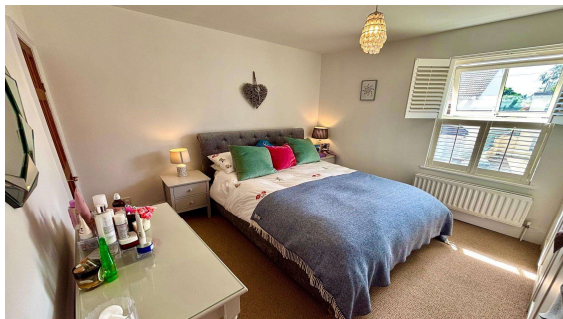
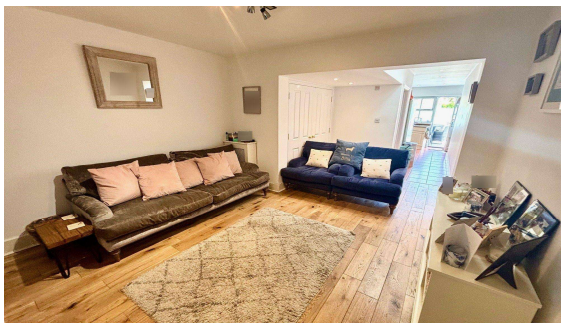




Denham Road, Egham, Surrey, TW20 9BY

£450,000 F/H



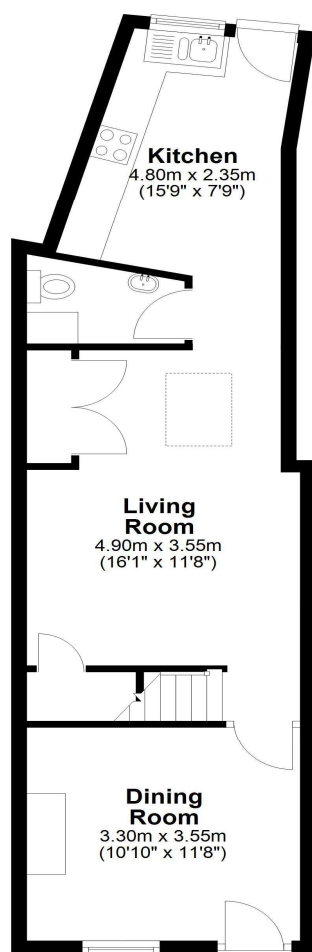
A truly stunning two bedroom Victorian terraced cottage, situated within a ten minute walk of mainline station, High Street and Magna Square. This extended home offers two reception rooms, large shaker style kitchen, downstairs cloakroom, utility room, luxury first floor four piece bathroom, double glazing, gas central heating and a 45ft (13.72m) landscaped rear garden. Access to brand Egham Orbit and Runnemedde Meadow is also close at hand.

Denham Road, Egham, Surrey, TW20 9BY

FLOOR PLAN

Ground Floor

Approx. 45.4 sq. metres (488.9 sq. feet)



First Floor

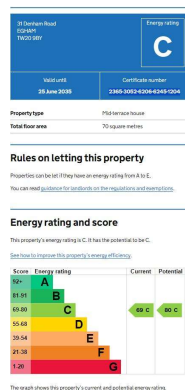
Approx. 31.7 sq. metres (341.1 sq. feet)



Total area: approx. 77.1 sq. metres (830.0 sq. feet)

All measurements are approximate. Nevin & Wells Residential have not tested any systems or appliances.

EPC



COUNCIL TAX BAND: D - Runnymede Borough Council

VIEWINGS:

By appointment with the clients selling agents,
Nevin & Wells Residential on 01784 437 437 or
visit www.nevinandwells.co.uk

