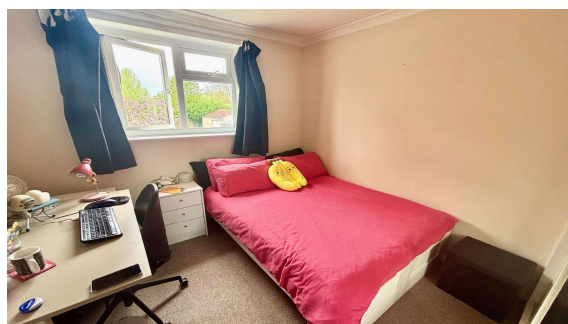
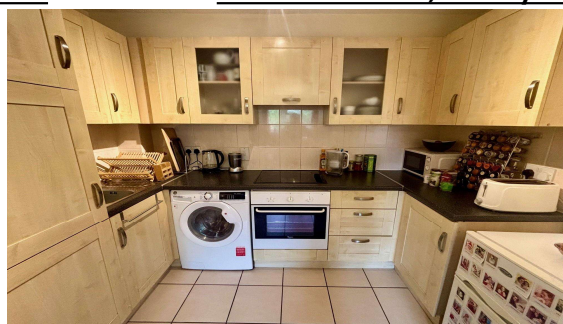
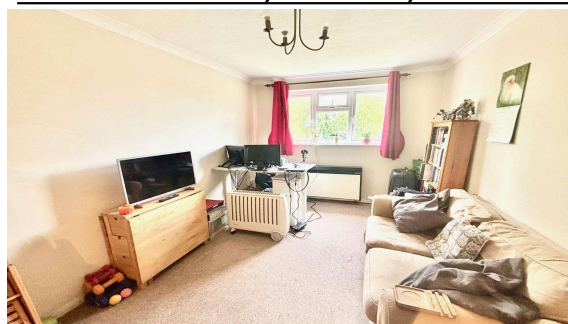


Chaucer Court, Staines, TW18 3DW

O.I.E.O £185,000 L/H



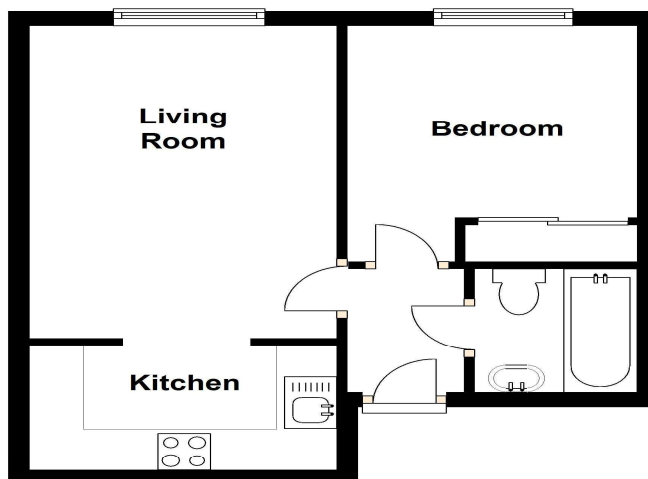
A charming one bedroom apartment perfectly positioned for easy access to Staines Town Centre, The River Thames, offering picturesque views and walks along its tow paths. Accommodation comprises lounge, kitchen and bathroom. Further benefits include security entry phone, allocated parking, double glazing and communal gardens.

Chaucer Court, Wendover Road, Staines-upon-Thames, TW18 3DW

FLOOR PLAN

First Floor

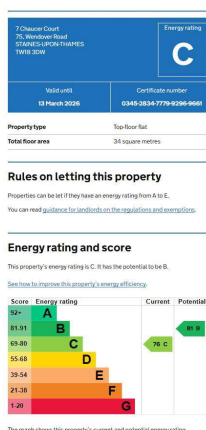
Approx. 30.2 sq. metres (325.4 sq. feet)



Total area: approx. 30.2 sq. metres (325.4 sq. feet)

All measurements are approximate. Nevin & Wells Residential have not tested any systems or appliances.

EPC



COUNCIL TAX BAND:

B - Runnymede Borough Council

LEASE:

New 99 year lease upon completion of sale (awaiting written confirmation)

GROUND RENT:

£200 per Annum (awaiting written confirmation)

SERVICE CHARGE:

£1205.26 per annum (awaiting written confirmation)

VIEWINGS:

By appointment with the clients selling agents,
Nevin & Wells Residential on 01784 437 437 or
visit www.nevinandwells.co.uk

