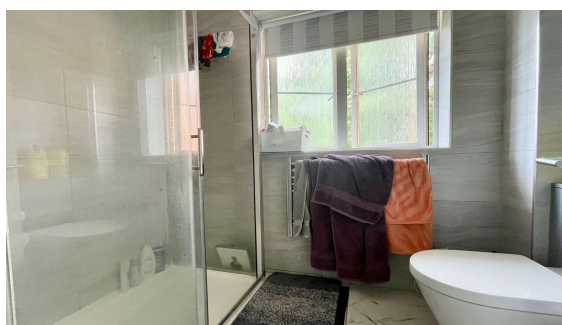
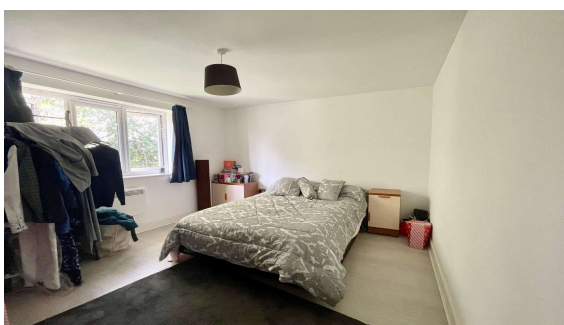


Windermere Close, Egham, Surrey, TW20 8JR

£425,000 F/H



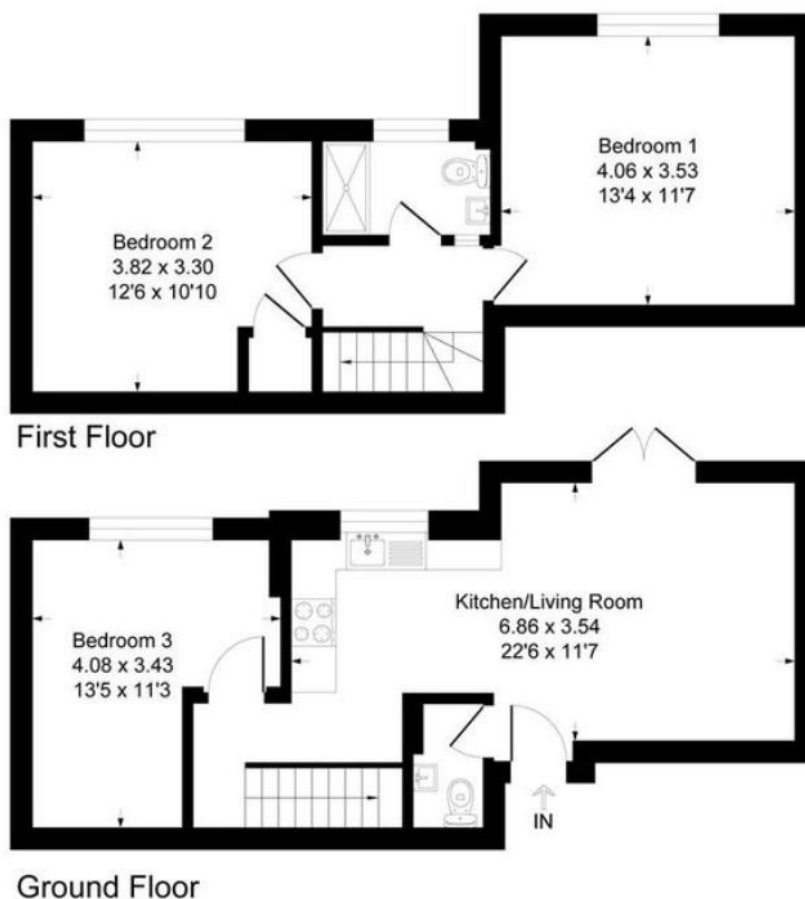
Situated on the popular 'Bourne Lea' development, this three double bedroom staggered end of terrace home offering modern fittings and the added benefit of no onward chain. This property offers open plan kitchen/lounge, downstairs WC and bedroom on ground floor. The first floor offers two further bedrooms and a separate shower room. Outside there is a private rear garden with side access, residents parking is also available. Local shops are within short distance, while Egham mainline station is a fifteen-to-twenty-minute walk.

Windermere Close, Egham, Surrey, TW20 8JR

FLOOR PLAN

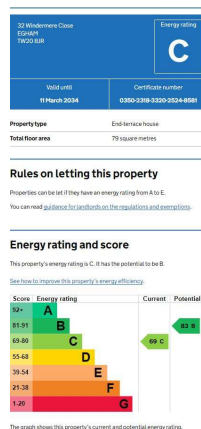
Windermere Close

Approximate Gross Internal Floor Area = 76.4 sq m / 822 sq ft



All measurements are approximate. Nevin & Wells Residential have not tested any systems or appliances.

EPC



COUNCIL TAX BAND:

C - Runnymede Borough Council

VIEWINGS:

By appointment with the clients selling agents,
Nevin & Wells Residential on 01784 437 437 or
visit www.nevinandwells.co.uk

