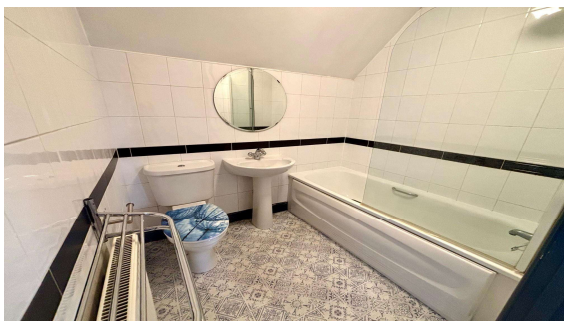


Crown Street, Egham, TW20 9DA

£275,000 Share of Freehold

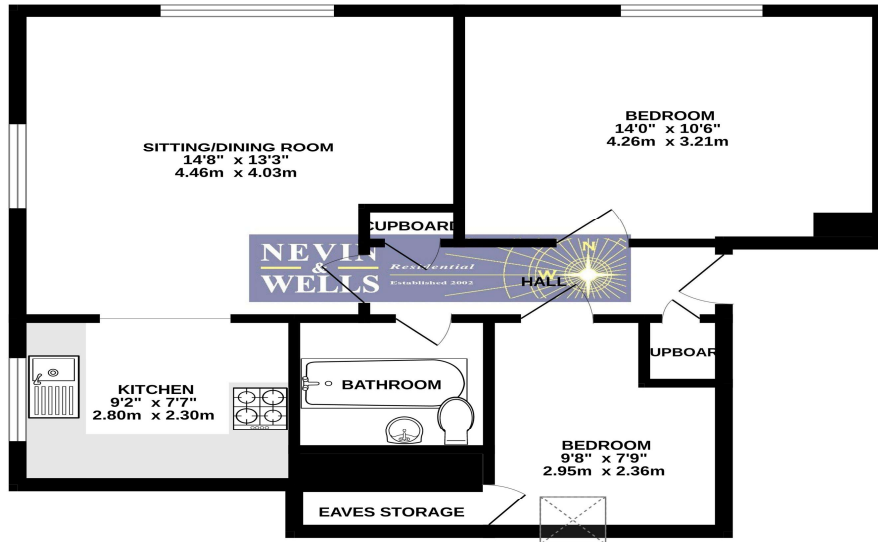


Located in a quiet cul-de-sac just yards from High Street amenities, Magna Square, Runnymede Riverside and Mainline train station is this two bedroom top floor apartment with allocated parking. Accommodation comprises entrance hallway, living room, fitted kitchen and bathroom. Further benefits include double glazing, gas central heating and no onward chain.

Crown Street, Egham, Surrey, TW20 9DA

FLOOR PLAN

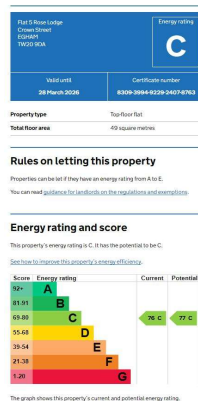
GROUND FLOOR
575 sq.ft. (53.5 sq.m.) approx.



TOTAL FLOOR AREA: 575 sq.ft. (53.5 sq.m.) approx.
Whilst every attempt has been made to ensure the accuracy of the floorplan contained here, measurements of doors, windows, rooms and any other items are approximate and no responsibility is taken for any error, omission or mis-statement. This plan is for illustrative purposes only and should be used as such by any prospective purchaser. The services, systems and appliances shown have not been tested and no guarantee as to their operability or efficiency can be given.
Made with Metrepro ©2025

All measurements are approximate. Nevin & Wells Residential have not tested any systems or appliances.

EPC



COUNCIL TAX BAND:

LEASE:

GROUND RENT:

SERVICE CHARGE:

VIEWINGS:

C - Runnymede Borough Council
105 year (Awaiting written confirmation)
£300 per annum
£1,644 per annum

**By appointment with the clients selling agents,
Nevin & Wells Residential on 01784 437 437 or
visit www.nevinandwells.co.uk**

