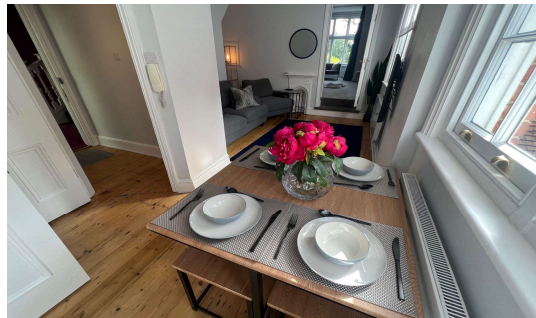
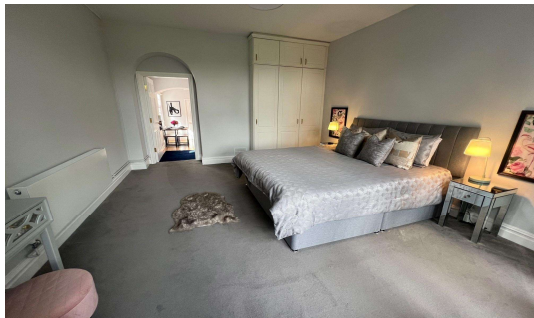




Kinburn Drive, Englefield Green, TW20 0BD

£275,000 L/H

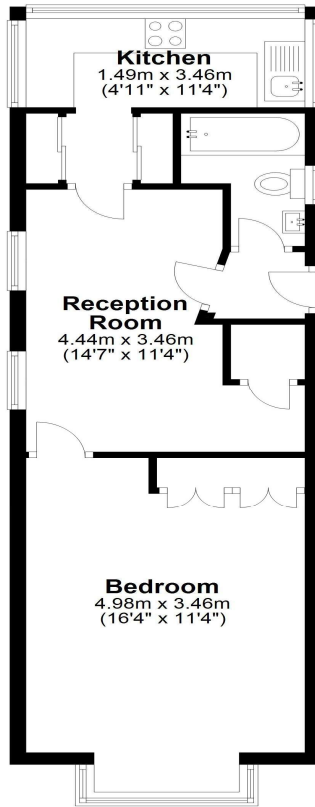


Situated in a stunning tree lined and private lane and recently renovated, yet still only a twelve minute walk to High Street, Magna Square and mainline station is this first floor, one bedroom apartment in a converted manor house. In addition there is a single detached garage and parking, mature communal gardens and the huge benefit of **NO ONWARD CHAIN.**

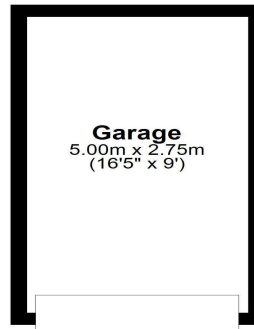
Kinburn Drive, Englefield Green, Surrey, TW20 0BD

FLOOR PLAN

First Floor
Approx. 43.5 sq. metres (468.4 sq. feet)



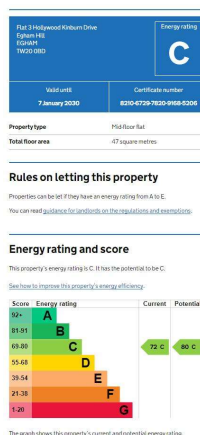
Garage
Approx. 13.7 sq. metres (148.0 sq. feet)



Total area: approx. 57.3 sq. metres (616.3 sq. feet)

All measurements are approximate. Nevin & Wells Residential have not tested any systems or appliances.

EPC



COUNCIL TAX BAND:

LEASE:

GROUND RENT:

MAINTENANCE:

VIEWINGS:

C - Runnymede Borough Council
125 years from 10th November 2016 (awaiting written confirmation)
Permanently frozen at £500 per annum (awaiting written confirmation)
£1,650 per annum. (awaiting written confirmation)

By appointment with the clients selling agents, Nevin & Wells Residential on 01784 437 437 or visit www.nevinandwells.co.uk

