



£265,000

3 Bedroom Semi-Detached House for sale

26 Mill Lane, Barton Under Needwood, Burton-on-Trent



EweMove
SALES AND LETTINGS



Overview

ENQUIRE NOW VIA OUR EWEMOVE WEBSITE OR CALL US 24/7.
Nestled within this charming village, you'll find a spacious family home.
This unique home offers the modern lifestyle you crave and sits on a sizable plot!



Key Features

- Chain Free
- Cedar Wood House
- UPVC Double Glazed & Gas Central Heating
- Brand New Kitchen
- Spacious Inside & Out!
- Good Schools - John Taylor Catchment
- Sought After Village
- Close To Barton Marina





Your journey begins in the welcoming hallway, leading you to an open-plan lounge/diner bathed in natural light. Slide open the doors and let the outside in, creating an inviting space to relax and unwind.

The brand-new kitchen beckons you with its cream shaker-style cabinets and wood-effect countertops. Equipped with integrated electric oven and gas hob, this kitchen inspires your culinary creativity.

A handy utility room with its own entrance and a small WC add practicality to your daily routine. Need a workspace for your remote endeavors? We've got you covered with a small study area.

Head upstairs to discover two spacious double bedrooms and a generous single bedroom, all serviced by a modern shower room. Each room is a canvas for your personal touch and style.



The pièce de résistance is the expansive, mature rear garden. Here, dreams take root, and the potential to expand your living space could become your reality.

Situated in the prime location of Barton under Needwood, this property offers more than just a beautiful home. You'll be spoiled with an array of shops and amenities just a stone's throw away, and a short stroll will lead you to the highly popular Barton Marina.

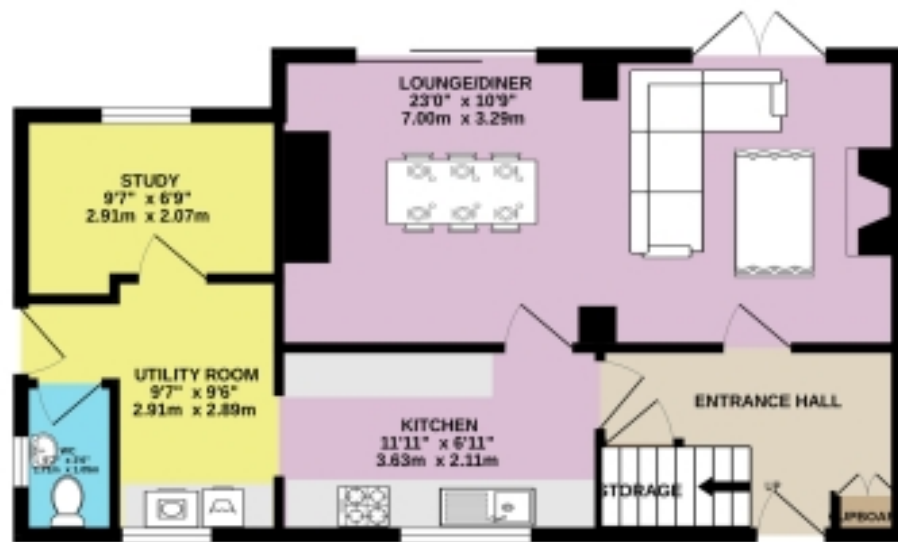
Explore the character-filled high street with traditional village pubs, a cozy cafe, the convenience of the Co-Op general store, and boutique gift shops – all right at your doorstep.

The nearby A38 provides easy access to the Cathedral City of Lichfield, the charm of Burton-On-Trent, and the vibrant cities of Derby and Birmingham.

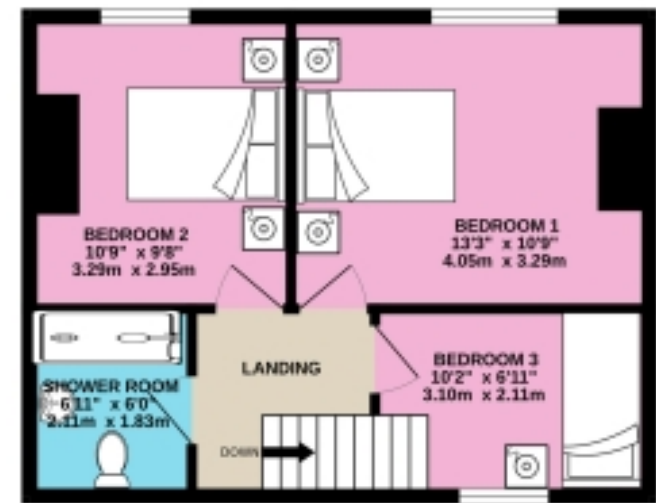
Don't let this opportunity pass you by. Secure your viewing today and immerse yourself in the eco-friendly elegance of this remarkable home in Barton-Under-Needwood.

Floorplans

GROUND FLOOR
537 sq.ft. (49.8 sq.m.) approx.



1ST FLOOR
394 sq.ft. (36.6 sq.m.) approx.



TOTAL FLOOR AREA : 930 sq.ft. (86.4 sq.m.) approx.

Whilst every attempt has been made to ensure the accuracy of the floorplan contained here, measurements of doors, windows, rooms and any other items are approximate and no responsibility is taken for any error, omission or mis-statement. This plan is for illustrative purposes only and should be used as such by any prospective purchaser. The services, systems and appliances shown have not been tested and no guarantee as to their operability or efficiency can be given.
Made with Metrofix ©2023

Floorplans

GROUND FLOOR
537 sq.ft. (49.8 sq.m.) approx.

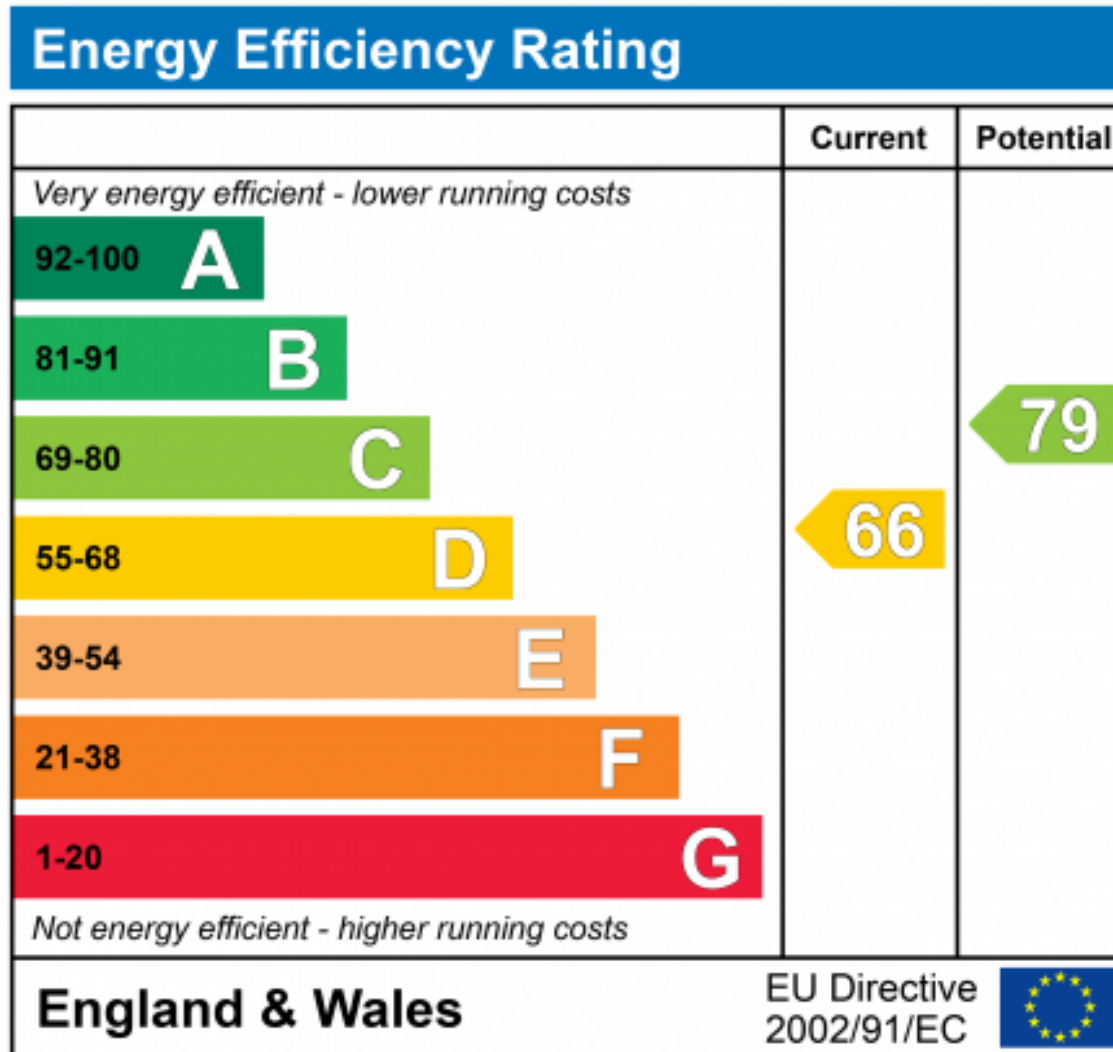


1ST FLOOR
394 sq.ft. (36.6 sq.m.) approx.



TOTAL FLOOR AREA : 930 sq.ft. (86.4 sq.m.) approx.

For illustrative purposes only. Decorative finishes, fixtures, fittings and furnishings do not represent the current state of the property. Measurements are approximate. Not to scale.
Made with Metropix © 2023





Marketed by EweMove Barton-Under-Needwood

01543 624118 (24/7)
barton@ewemove.com

