



£300,000

2 Bedroom Detached Bungalow for sale

3 Chaseview Road, Alrewas, Burton-on-Trent



EweMove
SALES AND LETTINGS



Overview

ENQUIRE VIA OUR EWEMOVE WEBSITE to view this modern detached bungalow which presents a rare opportunity. Don't just take our word for it-schedule a viewing today and discover the size and potential of this beautiful family home for yourself.



Key Features

- Modern Bungalow
- Two Double Bedrooms
- Re-Fitted Kitchen & Bathroom
- Open Plan Living Room With Contemporary Gas Fire
- New Windows & Doors
- New Consumer Unit
- Private Rear Garden
- Driveway & Detached Garage
- Sought After Village Location
- Excellent Local Amenities





ENQUIRE VIA OUR EWEMOVE WEBSITE to view this modern detached bungalow which presents a rare opportunity. Don't just take our word for it-schedule a viewing today and discover the size and potential of this beautiful family home for yourself.

This modern bungalow has been meticulously refurbished, boasting new windows, doors, and a consumer unit.

As you approach, the allure of ample parking via a driveway and a convenient garage greets you along with a lawned front garden. Step through the front door and into a welcoming entrance hall.

The spacious lounge and kitchen area beckons, inviting gatherings and cozy evenings by the contemporary gas fire. Two generously sized bedrooms offer retreats for rest and rejuvenation, both served by a modern fitted bathroom.

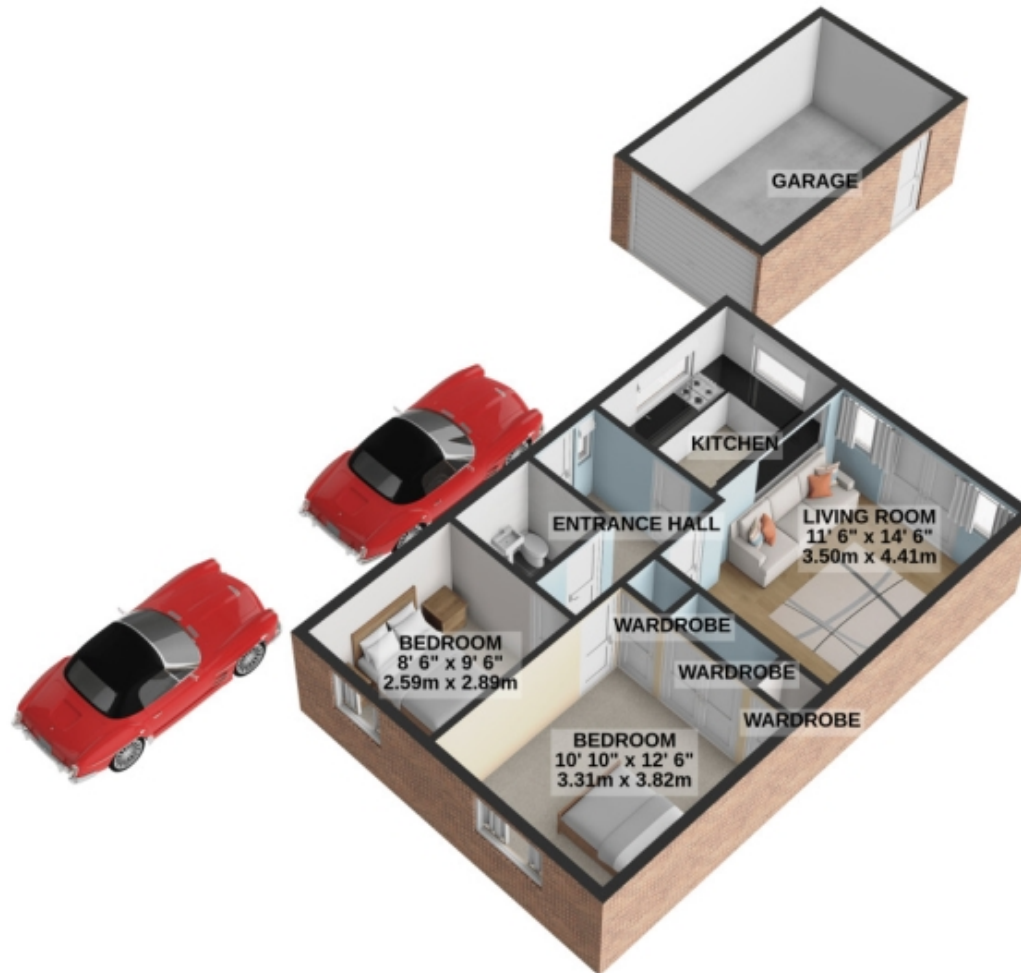


Chaseview Road isn't just a home; it's a gateway to the charm of Alrewas. With the beautiful winding Trent & Mersey Canal running through, this village boasts a rich history and vibrant community spirit. Enjoy the convenience of local amenities, from charming pubs like the Crown Inn and the George and Dragon, to nearby shops, supermarkets, schools, and leisure facilities.

Outside, a private rear garden awaits, offering a serene backdrop for outdoor entertaining.

Floorplans

GROUND FLOOR
726 sq.ft. (67.5 sq.m.) approx.



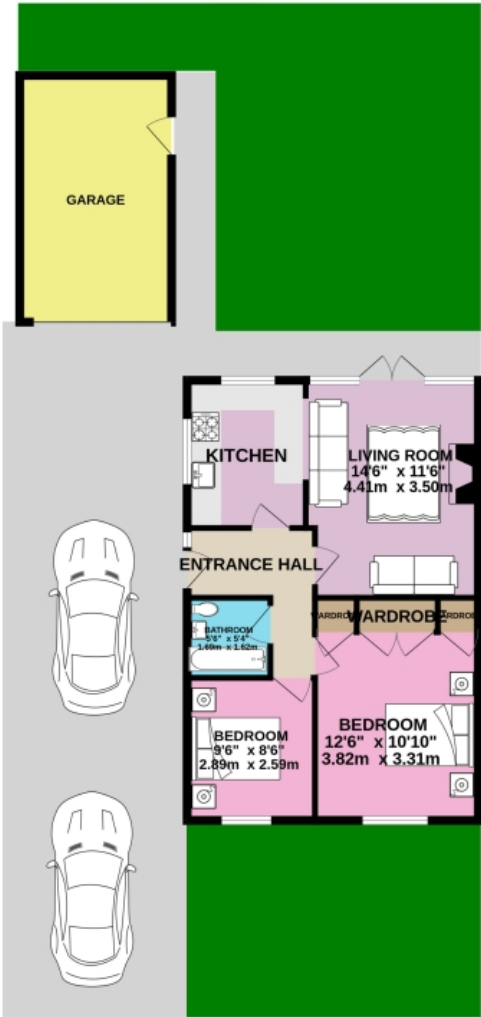
TOTAL FLOOR AREA : 726 sq.ft. (67.5 sq.m.) approx.

For illustrative purposes only. Decorative finishes, fixtures, fittings and furnishings do not represent the current state of the property. Measurements are approximate. Not to scale.

Made with Metropix © 2024

Floorplans

GROUND FLOOR
726 sq.ft. (67.5 sq.m.) approx.

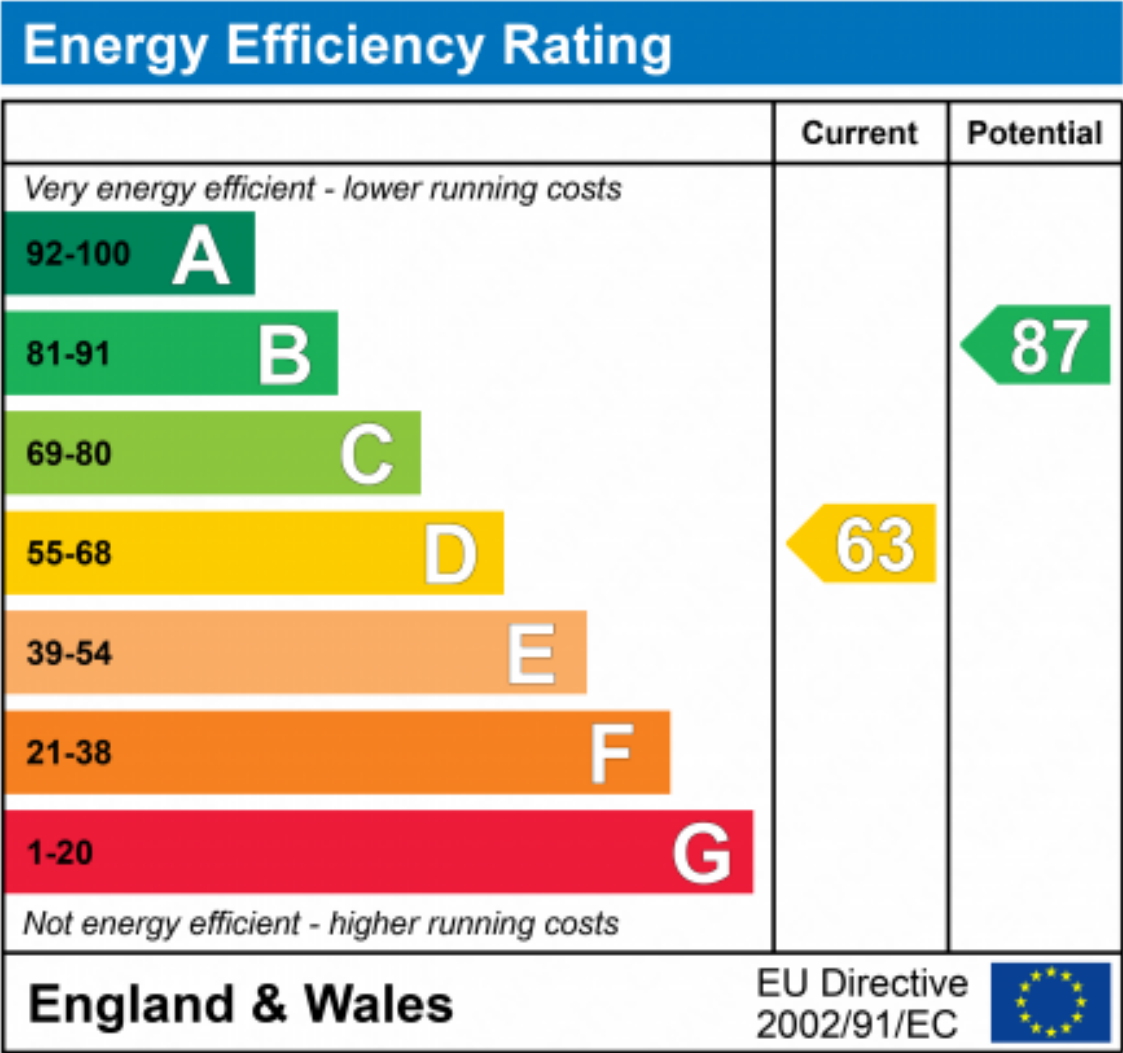


TOTAL FLOOR AREA: 726 sq.ft. (67.5 sq.m.) approx.

Whilst every attempt has been made to ensure the accuracy of the floorplan contained here, measurements of doors, windows, rooms and any other items are approximate and no responsibility is taken for any error, omission or mis-statement. This plan is for illustrative purposes only and should be used as such by any prospective purchaser. The services, systems and appliances shown have not been tested and no guarantee is given as to their operability or efficiency can be given.

Made with Metropix ©2024







Marketed by EweMove Barton-Under-Needwood

01543 624118 (24/7)
barton@ewemove.com

