



Offers In Excess Of £425,000

3 Bedroom Semi-Detached House for sale
26 Tyndal Way, Dartford



EweMove
SALES AND LETTINGS



Overview

Welcome to this stunning Semi Detached modern home, nestled within the sought-after Bridge Development in Dartford. This property offers the perfect blend of contemporary living and comfort with 2 Double Bedrooms, 1 Single Bedroom, 2 Bathrooms, 1 Ground floor WC, large living room, kitchen dining room, spacious rear garden, allocated parking and solar panels, There's nothing to not fall in love with this home.



Key Features

- Call NOW 24/7 Or Go Online to Book
- Very Popular Bridge Development
- Master Bedroom With En Suite
- Allocated Parking Space
- Within Catchment To Popular Grammar Schools
- Lovely Family Home
- Large Rear Garden
- Solar Panels Already Installed







Welcome to this stunning Semi Detached modern home, nestled within the sought-after Bridge Development in Dartford. This property offers the perfect blend of contemporary living and comfort with 2 Double Bedrooms, 1 Single Bedroom, 2 Bathrooms, 1 Ground floor WC, large living room, kitchen dining room, spacious rear garden, allocated parking and solar panels, There's nothing to not fall in love with this home.

Upon entering into the useable entrance hall you'll be greeted by the spacious living room providing an inviting and versatile space, perfect for both relaxation and entertainment. This then leads onto the modern and well-appointed kitchen dining room consisting of built in appliances equipped to meet your culinary needs and space to entertain the family or guests.

Convenience is key with the addition of a downstairs cloakroom, ensuring that guests and residents alike have easy access to facilities.

This home features two generously sized double bedrooms and one single, with the master bedroom benefiting from an en-suite shower room, providing privacy and convenience. The family bathroom completes the upstairs accommodations, offering both style and functionality.

Stepping outside, you'll discover a large rear garden, complete with a patio and grass areas for low-maintenance outdoor enjoyment. The rear access adds to the practicality and appeal of the outdoor space.

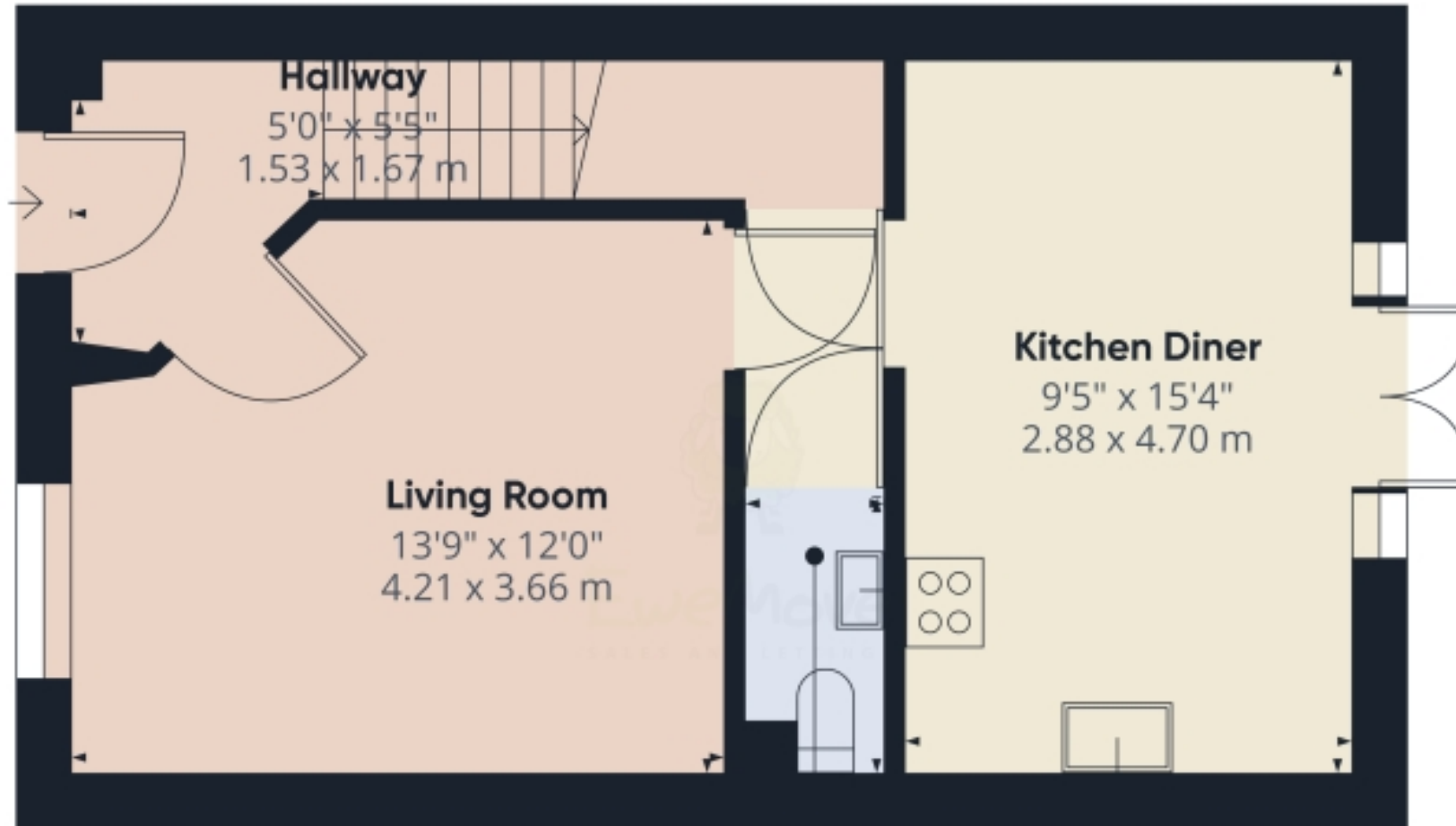
Located within the popular Bridge Development, this modern home is surrounded by amenities and offers easy access to the best that Dartford has to offer. Don't miss your chance to call this beautiful property your new home.

A service charge is payable for the bridge development of £351 half yearly.

To avoid disappointment please go to our website today to book your immediate accompanied viewing.



Floorplans



Hallway
5'0" x 5'5"
1.53 x 1.67 m

Living Room
13'9" x 12'0"
4.21 x 3.66 m

Kitchen Diner
9'5" x 15'4"
2.88 x 4.70 m

WC
3'4" x 5'11"
1.03 x 1.82 m



Approximate total area*
415.59 ft²
38.61 m²

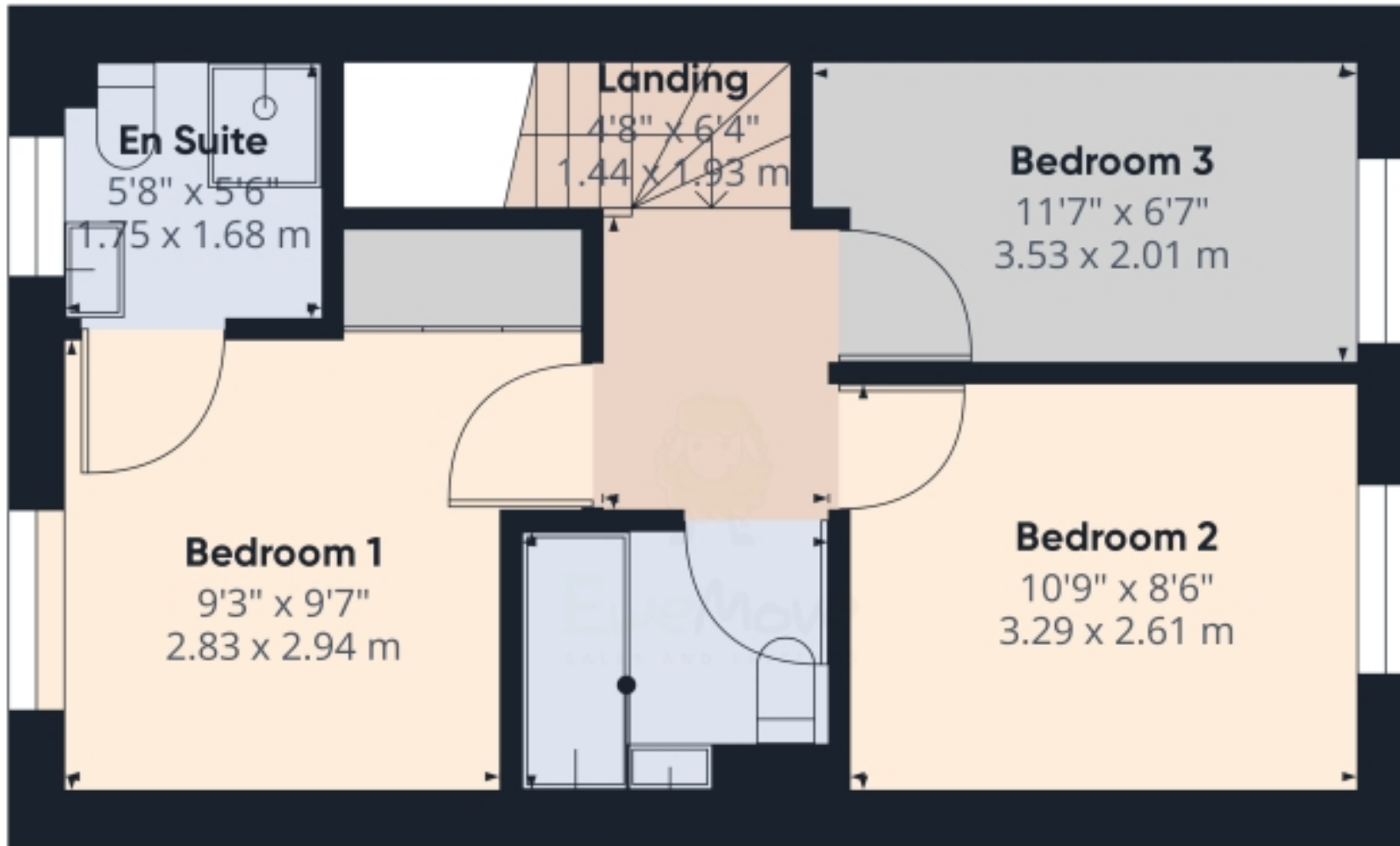
(*) Excluding balconies and terraces

While every attempt has been made to ensure accuracy, all measurements are approximate, not to scale. This floor plan is for illustrative purposes only.

GRAFFES360

Ground Floor

Floorplans



Approximate total area⁽¹⁾
372.7 ft²
34.63 m²

(1) Excluding balconies and terraces

While every attempt has been made to ensure accuracy, all measurements are approximate, not to scale. This floor plan is for illustrative purposes only.

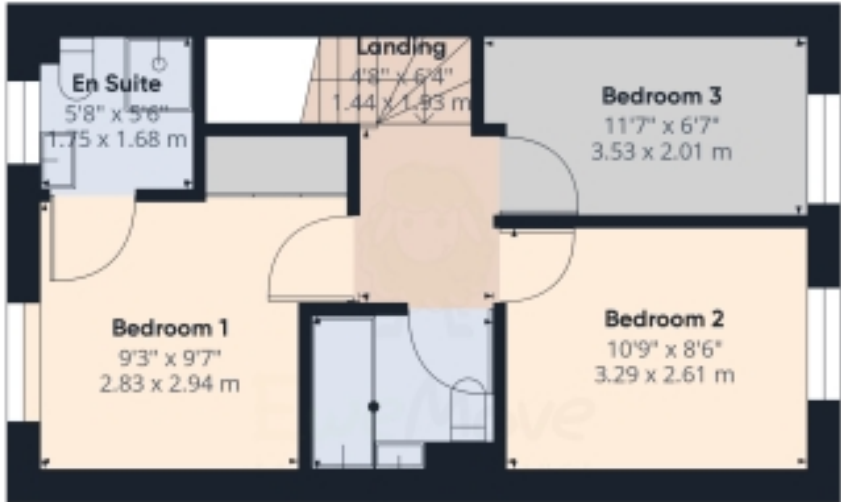
GIRAFFE 360

Floorplans



WC
3'4" x 5'11"
1.03 x 1.82 m

Ground Floor



Bathroom
6'7" x 5'6"
2.02 x 1.69 m

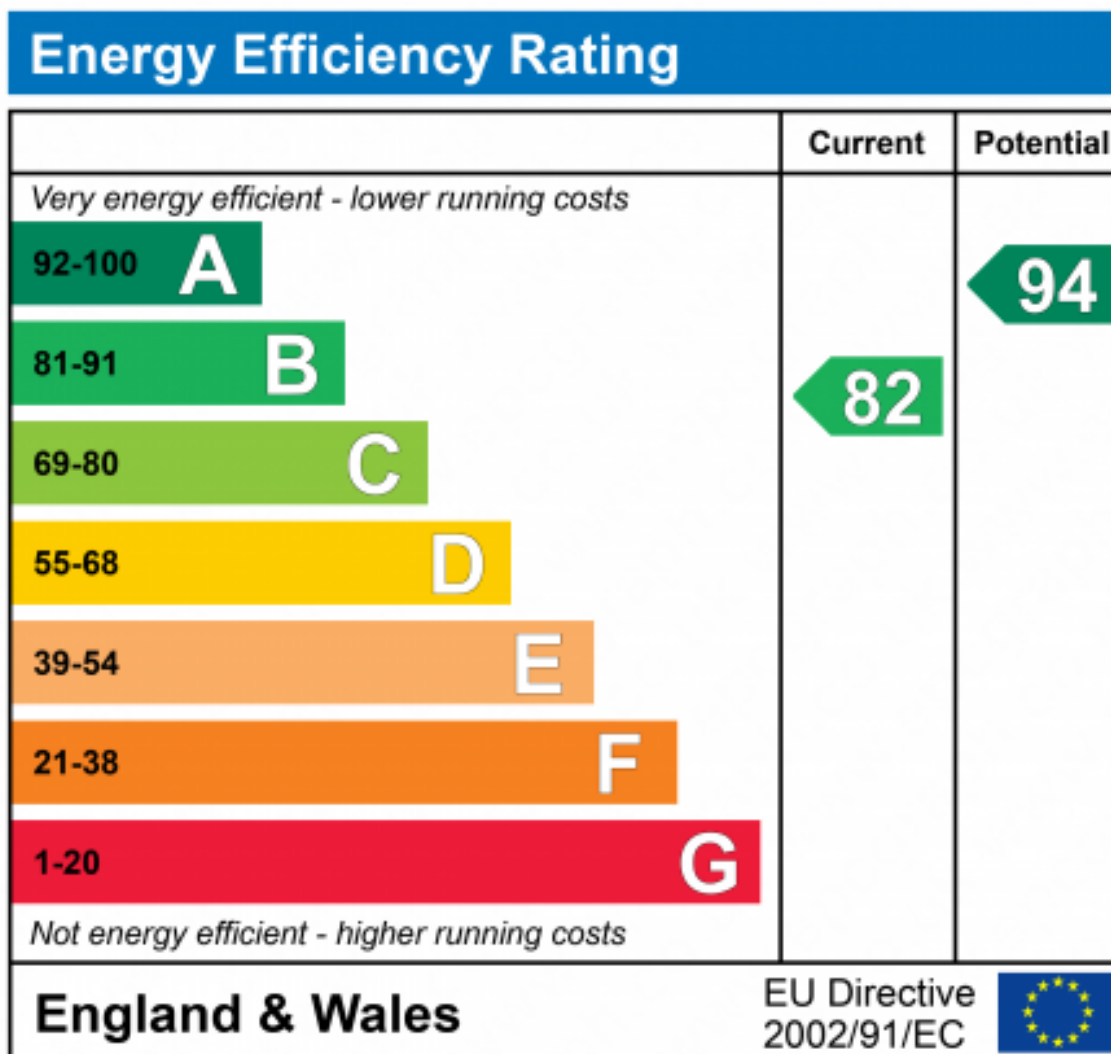
Floor 1



Approximate total area⁽¹⁾
788.29 ft²
73.23 m²

(1) Excluding balconies and terraces

While every attempt has been made to ensure accuracy, all measurements are approximate, not to scale. This floor plan is for illustrative purposes only.





Marketed by EweMove Dartford & Greenhithe

020 3953 8023 (24/7)
dartford@ewemove.com

