



Offers In Excess Of £240,000

2 Bedroom Apartment for sale  
23 Silver Train Gardens, Dartford



**EweMove**  
SALES AND LETTINGS



## Overview

CHAIN FREE - Impressive two-bedroom apartment located on the ever-popular Bridge Development in Dartford. Situated on the third floor, this apartment offers stunning views across Dartford from three balconies, allowing you to enjoy the surrounding beauty and cityscape.



## Key Features

- Call NOW 24/7 or book instantly online to View
- Attention - First Time Buyers
- Close to Excellent Local Amenities
- Very Popular Location
- Close to Excellent Local Transport Links
- Close to Local Schools





**CHAIN FREE** - Impressive two-bedroom apartment located on the ever-popular Bridge Development in Dartford. Situated on the third floor, this apartment offers stunning views across Dartford from three balconies, allowing you to enjoy the surrounding beauty and cityscape.

Upon entering the apartment, either by the stairs or lift, you are greeted by a spacious and welcoming ambiance. The large kitchen and living area form the heart of the home, providing a comfortable and versatile space for relaxing and entertaining. The kitchen is well-appointed, offering ample storage and workspace for all your culinary needs.

The apartment comprises two generously sized bedrooms, both of which are doubles, ensuring ample space for comfortable living. The bedrooms are well-lit, with natural light streaming in through large windows, creating a bright and airy atmosphere.



A well-maintained bathroom completes the accommodation, featuring a bath and a shower over it. This arrangement offers flexibility, allowing you to choose between a relaxing soak or a quick shower, depending on your preference.

One of the notable features of this property is the allocated parking space, providing convenient and secure parking for residents and their visitors.

This ensures that you will always have a dedicated parking spot, eliminating the hassle of searching for parking in the area.

The Bridge Development itself is a sought-after location, known for its vibrant community and excellent amenities. There are various shops, supermarkets, restaurants, and cafes within easy reach, offering a range of options for shopping and dining. Additionally, the development is well-connected, with good transport links including nearby bus stops and Dartford train station, making commuting and exploring the surrounding areas convenient.

Overall, this two-bedroom apartment on the Bridge Development in Dartford offers comfortable living spaces, breathtaking views, and the convenience of allocated parking. Whether you are a first-time buyer, a couple, or someone looking for an investment opportunity, this property is sure to impress.

#### Additional Information:

- 2 Double Bedrooms
- Popular Bridge Development
- Long 114 Year Lease
- Top Floor Apartment
- Council Tax:

Band D

- Energy Performance Certificate (EPC) Rating:

Band B (81-91)

- Ground Rent:

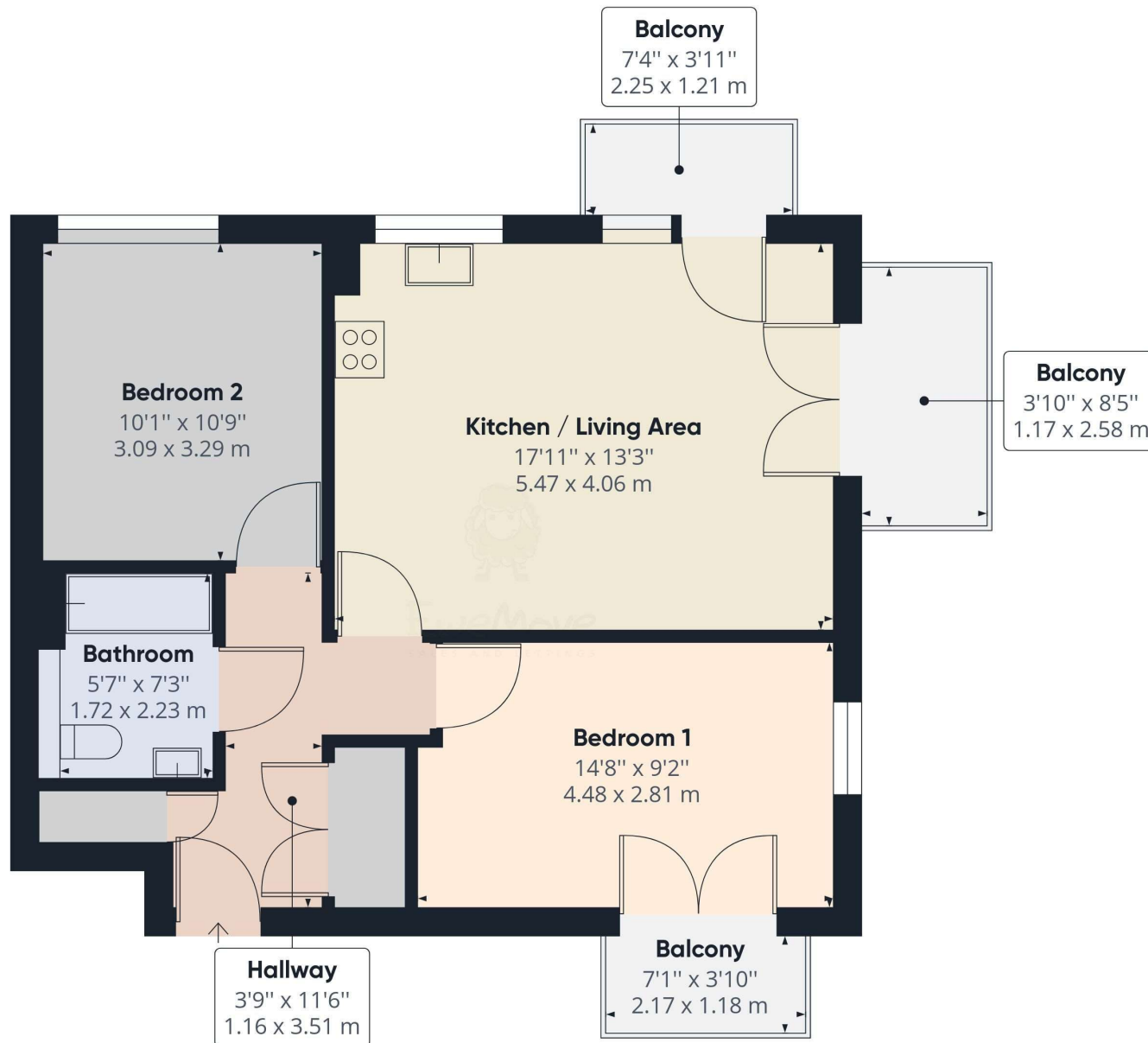
&pound;125 Every 12 Months

- Service Charge:

&pound;1479 Every 12 Months

Don't miss the chance to make this wonderful apartment your new home. Contact us today to arrange a viewing at our open house on the 1st July 2023 by going to our website now.

# Floorplans



Approximate total area<sup>(1)</sup>

626.34 ft<sup>2</sup>

58.19 m<sup>2</sup>

(1) Excluding balconies and terraces

While every attempt has been made to ensure accuracy, all measurements are approximate, not to scale. This floor plan is for illustrative purposes only.

GIRAFFE360

# EPC

The EPC will be available within 28 days or the property may be exempt, please speak to us for more details.



Marketed by EweMove Dartford & Greenhithe

020 3953 8023 (24/7)  
dartford@ewemove.com

