



£1,600 pcm

3 Bedroom Detached Bungalow to rent

74 The Beeches, Upton-upon-Severn, Worcester



EweMove
SALES AND LETTINGS



Overview

Detached, spacious, high specification, three bedroom bungalow, with a landscaped garden, sun-room and detached garage.

Located in the semi rural Holly Green area of Upton Upon Severn, this home rarely becomes available.



Key Features

- Enclosed Landscaped Garden
- High Specification fully fitted Kitchen
- Garage and Parking for at least 3 cars
- Open Plan Living area with direct garden access
- Sun Room in Garden
- Large Main Bedroom with Fitted Wardrobes
- Modern bathroom with P bath and over shower
- Semi Rural location, with easy access to M5, Worcester, Malvern & Tewkesbury
- Good local schools



Detached , spacious, high specification, three bedroom bungalow, with a landscaped garden, sun-room and detached garage.

Located in the semi rural Holly Green area of Upton Upon Severn, this home rarely becomes available.

Double Glazed with modern oil central heating and gas hob in kitchen.

Ewe should book to take a look...

Kitchen

10' 9" x 8' 2" (3.30m x 2.50m)

Reception Room

14' 9" x 14' 5" (4.50m x 4.40m)

Dining Room

11' 9" x 8' 2" (3.60m x 2.50m)

Bedroom 1

13' 5" x 13' 1" (4.10m x 4.00m)

Bedroom 2

13' 5" x 9' 6" (4.10m x 2.90m)

Bedroom 3

9' 6" x 9' 2" (2.90m x 2.80m)

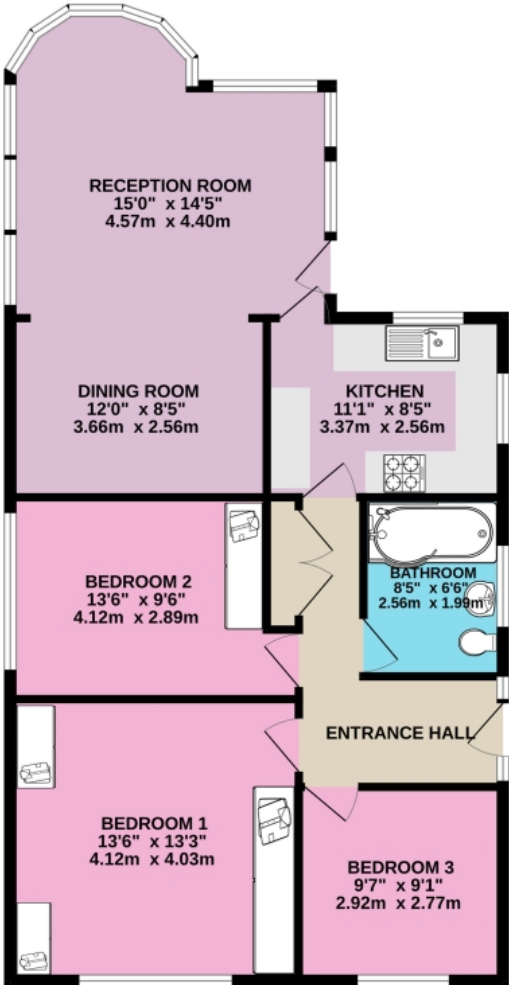
Bathroom

8' 6" x 6' 2" (2.60m x 1.90m)



Floorplans

GROUND FLOOR



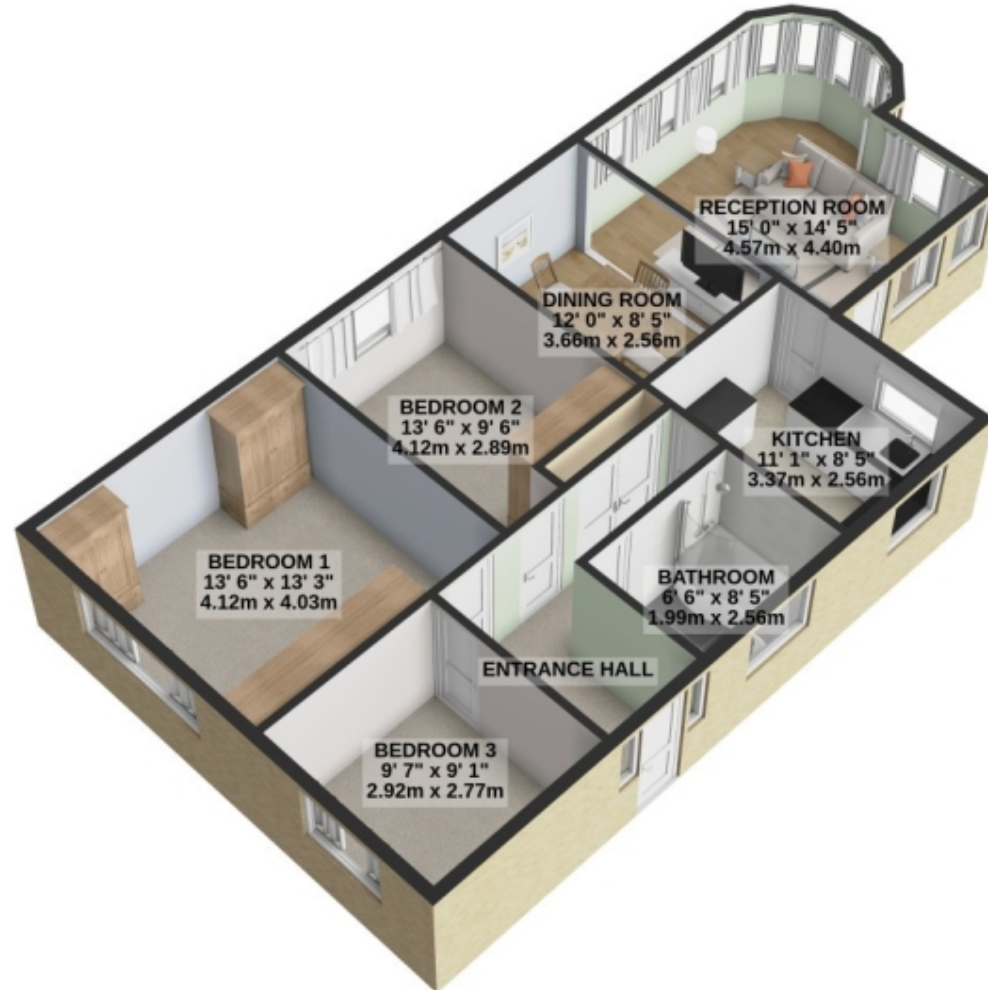
3 BEDROOM BUNGALOW, OPEN LIVING

Whilst every attempt has been made to ensure the accuracy of the floorplan contained here, measurements of doors, windows, rooms and any other items are approximate and no responsibility is taken for any error, omission or mis-statement. This plan is for illustrative purposes only and should be used as such by any prospective purchaser. The services, systems and appliances shown have not been tested and no guarantee as to their operability or efficiency can be given.
Made with Metropix 62025



Floorplans

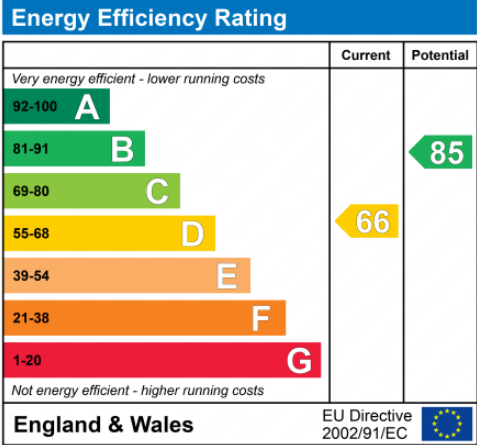
GROUND FLOOR
906 sq.ft. (84.1 sq.m.) approx.



3 BEDROOM BUNGALOW, OPEN LIVING

For illustrative purposes only. Decorative finishes, fixtures, fittings and furnishings do not represent the current state of the property. Measurements are approximate. Not to scale.

Made with Metropix © 2025





Marketed by Ewemove Worcester East

01905 967991 (24/7)
worcestereast@ewemove.com



EweMove
SALES AND LETTINGS